



REFERENCE: USGS 7.5 QUADRANGLE MAP FORT WALTON BEACH, 1992

0 1,000' 2,000'

SCALE: 1" = 1,000'



**TAYLOR ENGINEERING INC.**  
1221 AIRPORT ROAD  
SUITE 210  
DESTIN, FL 32541  
CERTIFICATE OF AUTHORIZATION # 4815

FIGURE 1  
PROJECT LOCATION MAP  
OKALOOSA BAYWALK  
OKALOOSA COUNTY, FLORIDA

PROJECT	C2014-006/069	SEAL
DRAWN BY	AF / RLJ	
SHEET	1 of 29	
DATE	JULY 2017	MATTHEW TRAMMELL P.E.# 69244
		DATE

REBECCA JOHNSON X:\SIS\PROJECTS\C2013-055 OKA GREENSHORE BAYWALK\PERMIT\C2014-069 OKA GREENSHORE BAYWALK\KIPERMIT\C2014-069-P-LOCATION MAP.DWG 7/27/2017 2:38:02 PM

REBECCA JOHNSON X:\SIS\PROJECTS\C2014-069 OKA GREENSHORE BAYWALK\PERMIT\C2014-069P-NOTES.DWG 7/27/2017 2:39:05 PM

**GENERAL NOTES:**

- DRAWING REFERENCES THE FLORIDA STATE PLANE NORTH, NORTH AMERICAN DATUM OF 1983 (NAD83)
- ALL ELEVATIONS REFERENCE THE 1988 NORTH AMERICAN VERTICAL DATUM (NAVD88). ELEVATIONS IN FEET UNLESS NOTED OTHERWISE.
- AERIAL IMAGERY OBTAINED FROM ESRI (2010) AND GOOGLE EARTH (2013). AERIAL IMAGERY DISPLAYED HEREON FOR INFORMATIONAL PURPOSES ONLY. NO PHOTOGRAPHIC ACCURACY IS IMPLIED BY THESE MAPS.
- FEDERAL NAVIGATION CHANNEL LIMITS OBTAINED FROM THE U.S. ARMY CORPS OF ENGINEERS MOBILE DISTRICT DRAWING FILE "GULF INTRACOASTAL WATERWAY WEST BAY TO SANTA ROSA SOUND CHOCTAWHATCHEE BAY, GIWW M. 224.0 - 225.0, 9897+00 - 9948+00, CONDITION SURVEY." SHEET 30 OF 59, DATED MARCH 2016.
- PARCEL BOUNDARIES OBTAINED FROM THE OKALOOSA COUNTY GIS DEPARTMENT ([HTTP://WEBGIS.OKALOOSAFL.COM/WEBGIS/](http://webgis.okaloosafl.com/webgis/)).
- EXISTING BOAT RAMP, RAMP STAGING DOCKS, AND FISHING PIER PERMITTED UNDER THE MARLER PARK RENOVATION PROJECT (FDEP PERMIT NO. 46-0210188-001-DF ISSUED JULY 2003 AND USACE PERMIT NO. 200202278(1P-TLZ) ISSUED MARCH 2004).
- BATHYMETRIC AND MEAN HIGH WATER LINE (MHWL) SURVEY PERFORMED BY SEASIDE ENGINEERING AND SURVEYING, LLC SEPTEMBER 2013. MHWL FIELD VERIFIED DECEMBER 2014.
- TOPOGRAPHIC SURVEY PERFORMED BY SEASIDE ENGINEERING AND SURVEYING, LLC DECEMBER 2014
- SEAGRASS SURVEY PERFORMED BY TAYLOR ENGINEERING, INC. SEPTEMBER 2013
- COASTAL WETLAND DELINEATION PERFORMED BY TAYLOR ENGINEERING, INC. SEPTEMBER 2013 AND FIELD VERIFIED BY FDEP ON SEPTEMBER 30, 2014.
- INLAND WETLAND DELINEATION PERFORMED BY TAYLOR ENGINEERING, INC. OCTOBER 2014 AND FIELD VERIFIED BY FDEP ON DECEMBER 16, 2014.
- OBSERVATION AREAS SHALL CONSIST OF MAINTAINED NATURAL AREAS. THE AREA SHALL BE BOUND BY POST AND ROPE, OR SIMILAR, TO DISCOURAGE FOOT TRAFFIC OUTSIDE OF THE MAINTAINED AREA. GROUND SURFACE TREATMENTS WITHIN THESE AREAS MAY INCLUDE GRAVEL, WOODCHIPS, OR SIMILAR.
- ALL FILL MATERIAL SHALL BE COMPRISED OF CLEAN SAND IN ACCORDANCE WITH THE OKALOOSA ISLAND COVENANTS AND RESTRICTIONS.

**GENERAL DOCKING FACILITY NOTES:**

- CONSTRUCTION SHALL NOT VIOLATE STATE WATER QUALITY STANDARDS
- BERTH DIMENSIONS REPRESENT THE OVERALL SLIP LENGTH AND WIDTH.
- NO LIVEBOARDS ARE PROPOSED
- NO FUELING FACILITIES OR SEWAGE PUMPOUTS ARE PROPOSED AT THIS FACILITY

- MATERIALS ARE SUBJECT TO CHANGE. PILE EMBEDMENT AND DIMENSIONS WILL BE DETERMINED DURING FINAL DESIGN.
- DOCK PILINGS WILL BE WRAPPED OR OTHERWISE MADE FROM NON-LEACHING MATERIALS.
- THE LOCATION OF TURBIDITY CURTAINS SHOWN ON THESE DRAWINGS FOR INFORMATIONAL PURPOSES ONLY. TURBIDITY CURTAINS SHALL BE LOCATED AND REPOSITIONED BY THE CONTRACTOR USING BEST MANAGEMENT PRACTICES TO ASSURE WATER QUALITY STANDARDS ARE MAINTAINED THROUGHOUT CONSTRUCTION.

**PROPOSED DOCK PLAN:**

- TOTAL NUMBER OF SLIPS: 22
- TOTAL FIXED TIMBER PIER AREA = ~21,765 S.F.
  - ~407 S.F. EXISTING (RIGHT BOAT RAMP DOCK)
  - ~432 S.F. EXISTING (LEFT BOAT RAMP DOCK)
  - ~100 S.F. DEMOLISHED (TO BE REMOVED TO EXTEND RIGHT BOAT RAMP DOCK)
  - ~659 S.F. PROPOSED RIGHT BOAT RAMP DOCK EXTENSION
  - ~16,101 S.F. PROPOSED (MAIN ACCESS PIER; W/ GAZEBO & FINGER PIERS)
  - ~1,586 S.F. PROPOSED (KAYAK LAUNCH DOCK)
- FLEXIBLE MOORING AREA: ~500 LINER FEET
- PROPOSED SUBMERGED LAND LEASE TOTAL AREA: 48,230 S.F.
 

AREA 1:	1,325 S.F.
AREA 2:	1,776 S.F.
AREA 3:	7,768 S.F.
AREA 4:	37,361 S.F.

**PROPOSED GRADING PLAN**

- TOTAL MARSH CREATION FILL VOLUME = ~2,300 CY

**ENVIRONMENTAL RESTORATION**

- OYSTER REEF (BREAKWATER) HABITAT: 1.42 ACRES
- SEAGRASS RECRUITMENT AREA: 1.23 ACRES
- SALTMARSH CREATION AREA: 1.03 ACRES
- SALTMARSH ENHANCEMENT AREA: 0.58 ACRES
- COASTAL UPLAND ENHANCEMENT AREA: 1.34 ACRES
- FRESHWATER WETLAND ENHANCEMENT AREA: 0.24 ACRES



**TAYLOR ENGINEERING INC.**

1221 AIRPORT ROAD  
SUITE 210  
DESTIN FL 32541  
CERTIFICATE OF AUTHORIZATION # 4815

FIGURE 2  
PROJECT NOTES  
OKALOOSA BAYWALK  
OKALOOSA COUNTY, FLORIDA

PROJECT	C2014-006/069
DRAWN BY	AF / RLJ
SHEET	2 of 29
DATE	JULY 2017

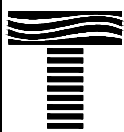
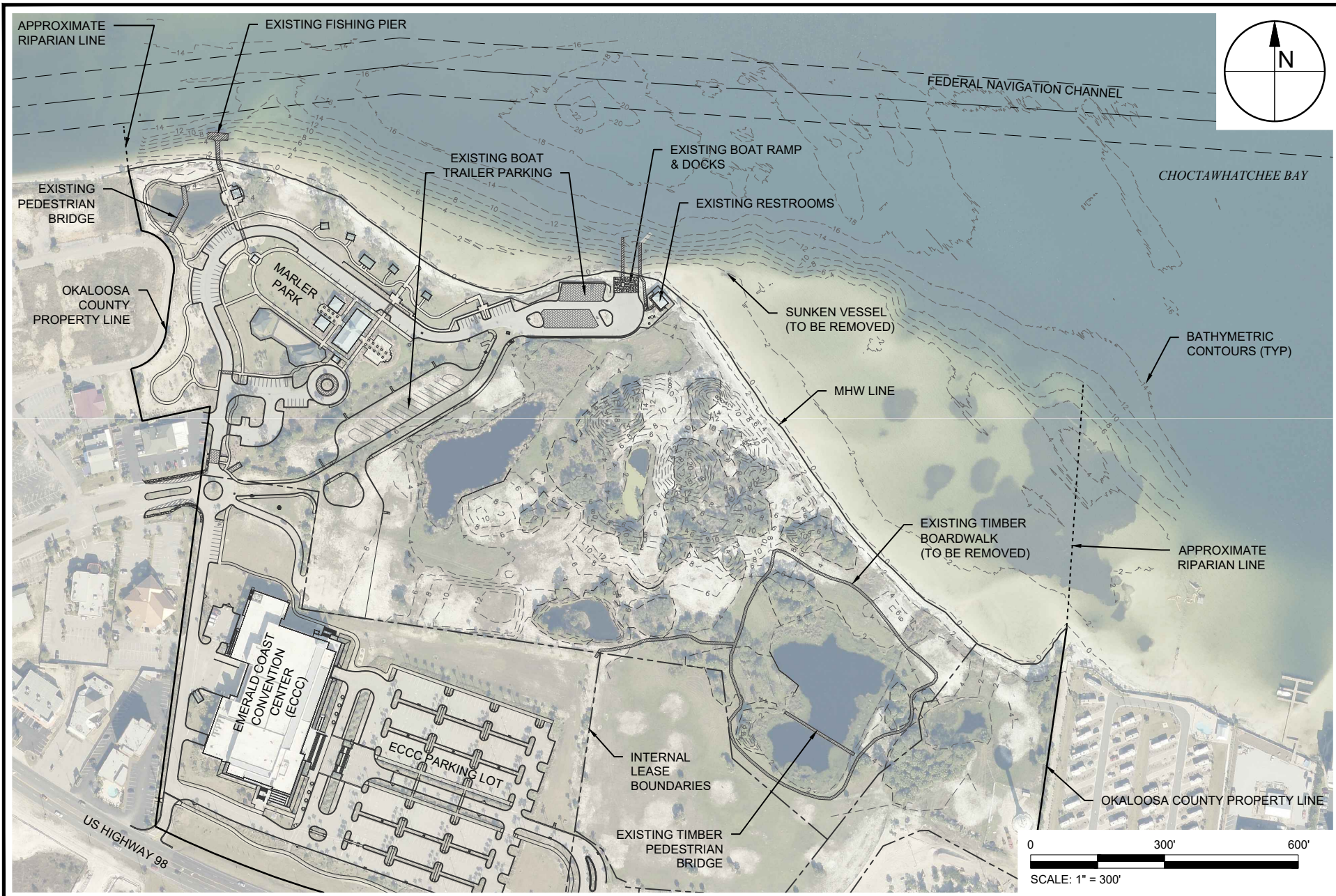
SEAL

MATTHEW TRAMMELL P.E.# 69244

DATE



REBECCA JOHNSON X:\S\PROJECTS\C2013-055 OKA GREENSHORES\2015 BAYWALK\PERMIT\C2014-066-P-EXISTING CONDITIONS LPL AND DWG 7/27/2017 2:39:21 PM



# TAYLOR ENGINEERING INC.

1221 AIRPORT ROAD  
SUITE 210  
DESTIN, FL 32541  
CERTIFICATE OF AUTHORIZATION # 4815

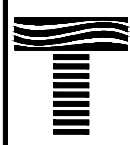
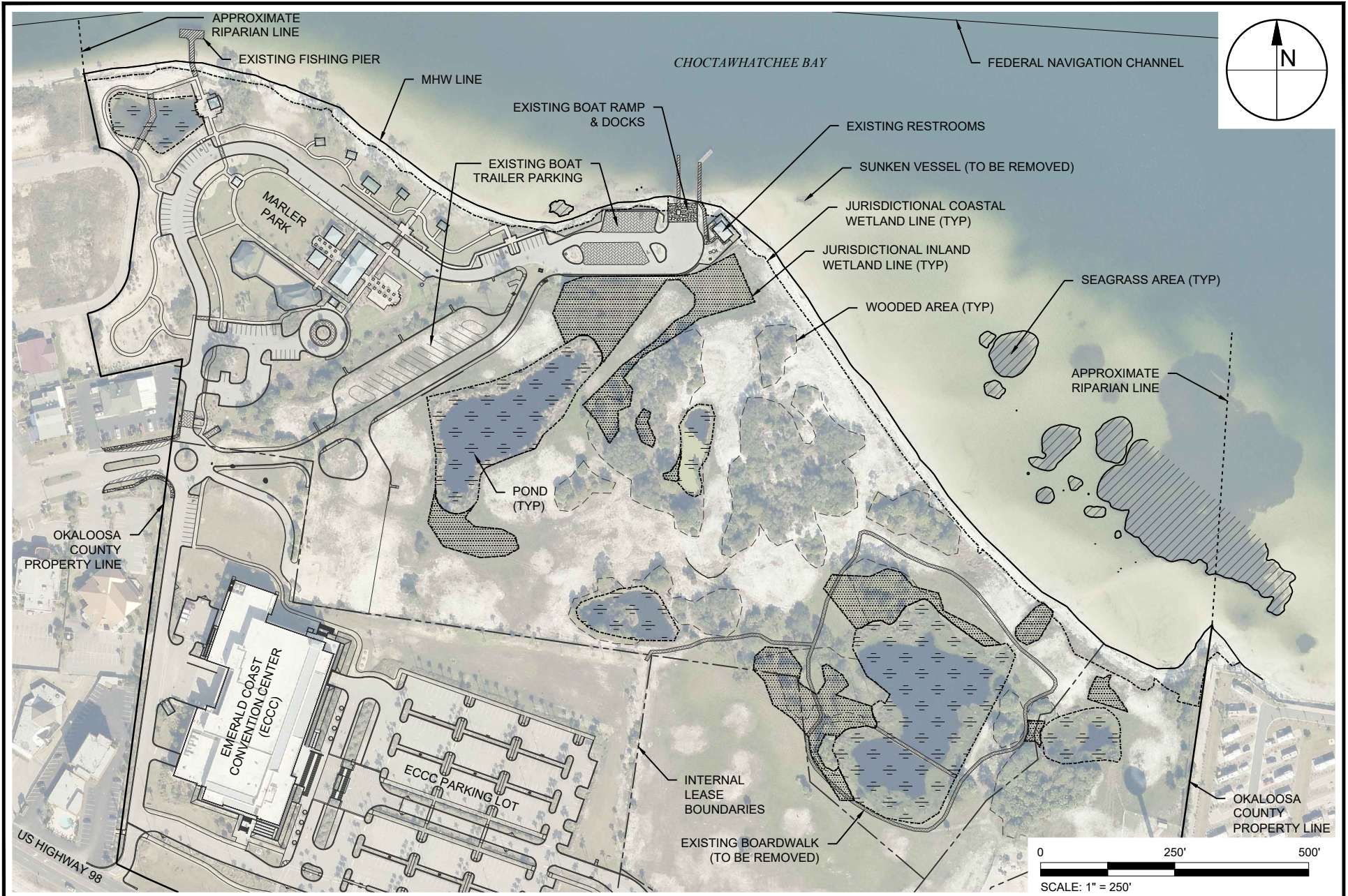
FIGURE 3  
EXISTING CONDITIONS  
OKALOOSA BAYWALK  
OKALOOSA COUNTY, FLORIDA

PROJECT	C2014-006/069
DRAWN BY	AF / RLJ
SHEET	3 of 29
DATE	JULY 2017

SEAL	
MATTHEW TRAMMELL P.E.# 69244	DATE



REBECCA JOHNSON X:\SIS\PROJECTS\C2014-069 OKA GREENSHORE BAYWALK\PERMIT\C2014-069-P-RESOURCE MAP.DWG 7/27/2017 2:39:34 PM



**TAYLOR ENGINEERING INC.**

1221 AIRPORT ROAD  
SUITE 210  
DESTIN, FL 32541  
CERTIFICATE OF AUTHORIZATION # 4815

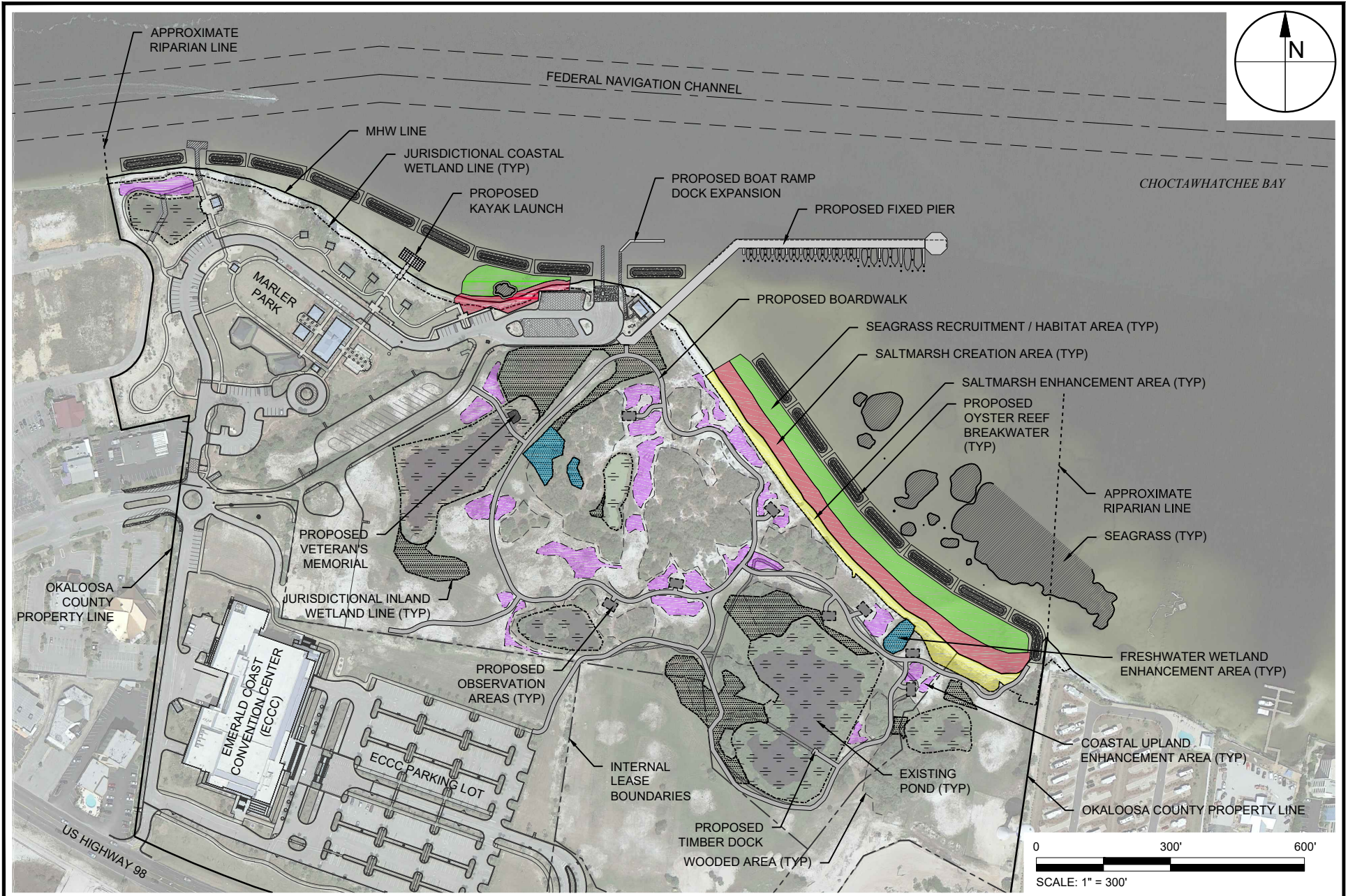
FIGURE 4  
EXISTING ENVIRONMENTAL RESOURCES MAP  
OKALOOSA BAYWALK  
OKALOOSA COUNTY, FLORIDA

PROJECT	C2014-006/069
DRAWN BY	AF / RLJ
SHEET	4 of 29
DATE	JULY 2017

SEAL	
MATTHEW TRAMMELL P.E.# 69244	DATE



REBECCA JOHNSON X:\S\PROJECTS\C2013-055 OKA GREENSHORE BAY\WALK\PERMIT\C2014-006-P-PROPOSED PLAN OVERVIEW.DWG 7/27/2017 2:30:42 PM



# TAYLOR ENGINEERING INC.

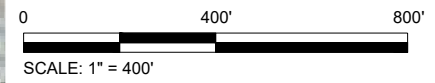
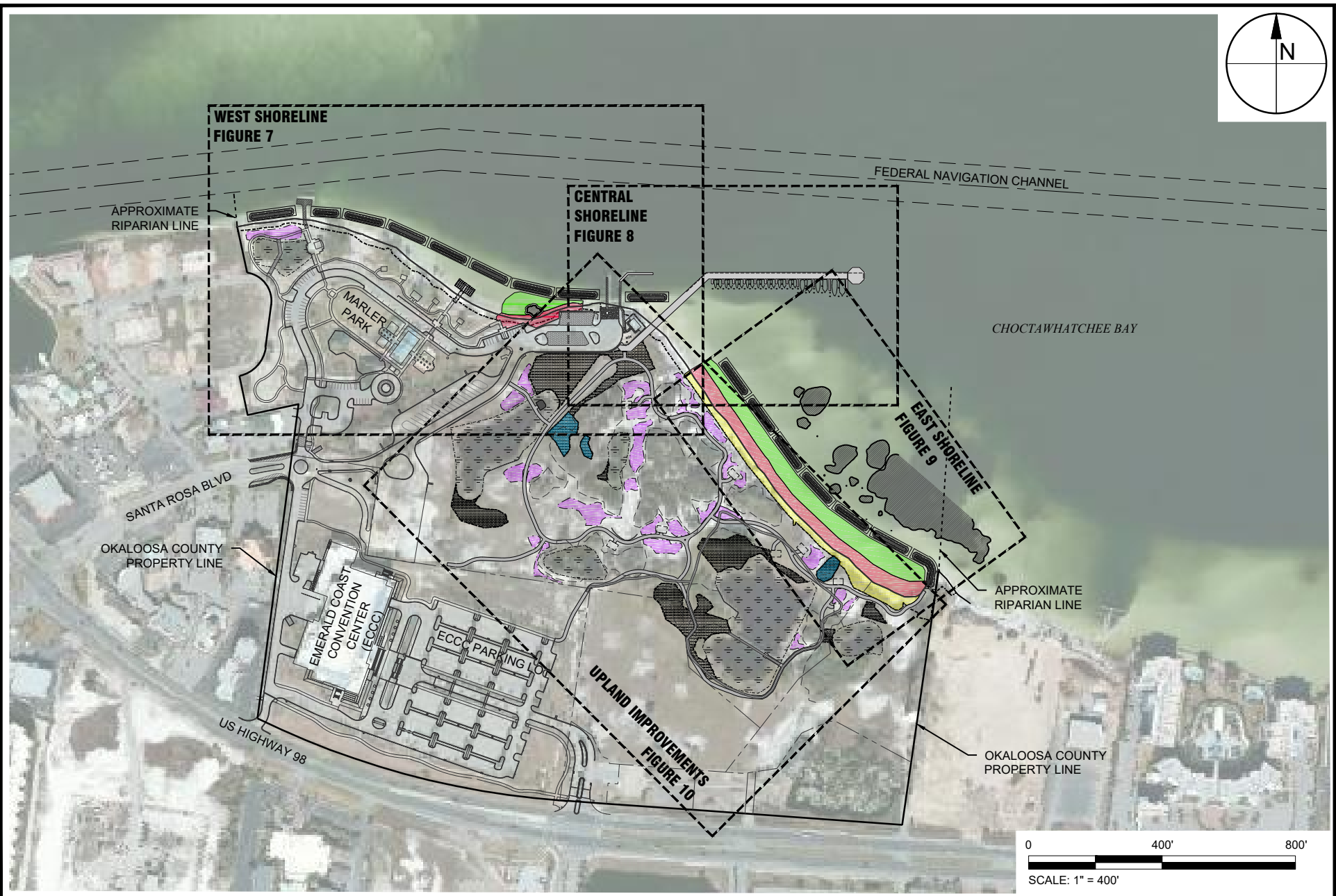
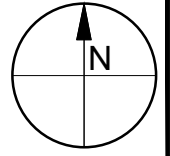
1221 AIRPORT ROAD  
SUITE 210  
DESTIN, FL 32541  
CERTIFICATE OF AUTHORIZATION # 4815

FIGURE 5  
PROJECT OVERVIEW  
OKALOOSA BAYWALK  
OKALOOSA COUNTY, FLORIDA

PROJECT	C2014-006/069
DRAWN BY	AF / RLJ
SHEET	5 of 29
DATE	JULY 2017

SEAL	
MATTHEW TRAMMELL P.E.# 69244	
DATE	





REBECCA JOHNSON X:\S\PROJECTS\C2013-053 OKA GREENSHORES\2015 BAYWALK\KPERMIT\C2014-069 OKA GREENSHORE BAYWALK\KPERMIT\C2014-069-P-SHEET-INDEX.DWG 7/27/2017 2:39:52 PM



**TAYLOR ENGINEERING INC.**  
 1221 AIRPORT ROAD  
 SUITE 210  
 DESTIN, FL 32541  
 CERTIFICATE OF AUTHORIZATION # 4815

FIGURE 6  
 SHEET INDEX  
 OKALOOSA BAYWALK  
 OKALOOSA COUNTY, FLORIDA

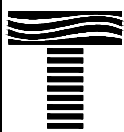
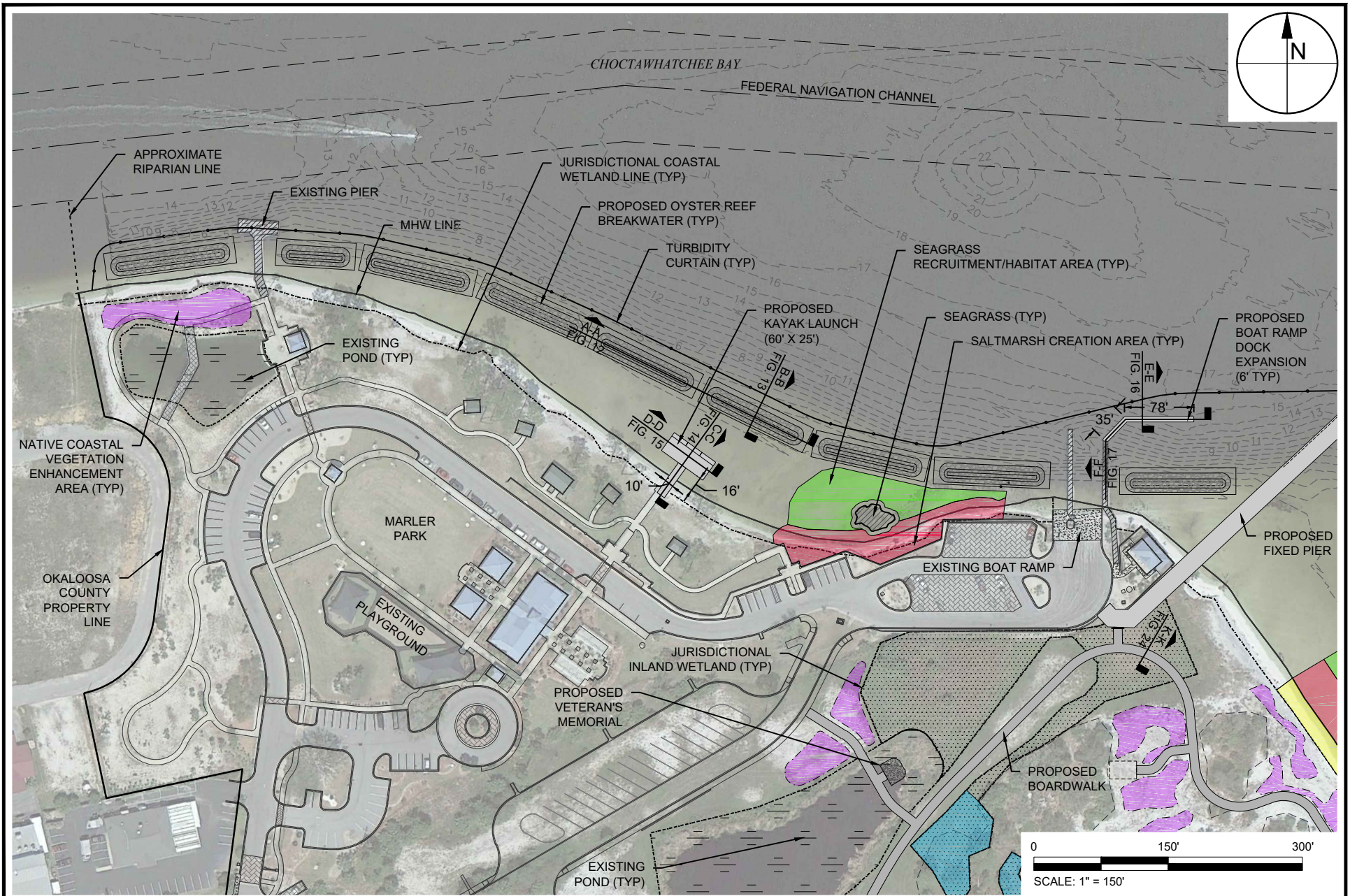
PROJECT	C2014-006/069
DRAWN BY	AF / RLJ
SHEET	6 of 29
DATE	JULY 2017

SEAL	
MATTHEW TRAMMELL P.E.# 69244	DATE

PRELIMINARY DRAWINGS: THESE DRAWINGS ARE NOT IN FINAL FORM, BUT ARE BEING TRANSMITTED FOR AGENCY REVIEW.



REBECCA JOHNSON X:\S\PROJECTS\C2014-069 OKA GREENSHORE BAY\WALK\PERMIT\C2014-069P-WEST PLAN.DWG 7/27/2017 2:40:02 PM



# TAYLOR ENGINEERING INC.

1221 AIRPORT ROAD  
SUITE 210  
DESTIN, FL 32541  
CERTIFICATE OF AUTHORIZATION # 4815

FIGURE 7  
PROPOSED WEST SHORELINE PLAN VIEW  
OKALOOSA BAYWALK  
OKALOOSA COUNTY, FLORIDA

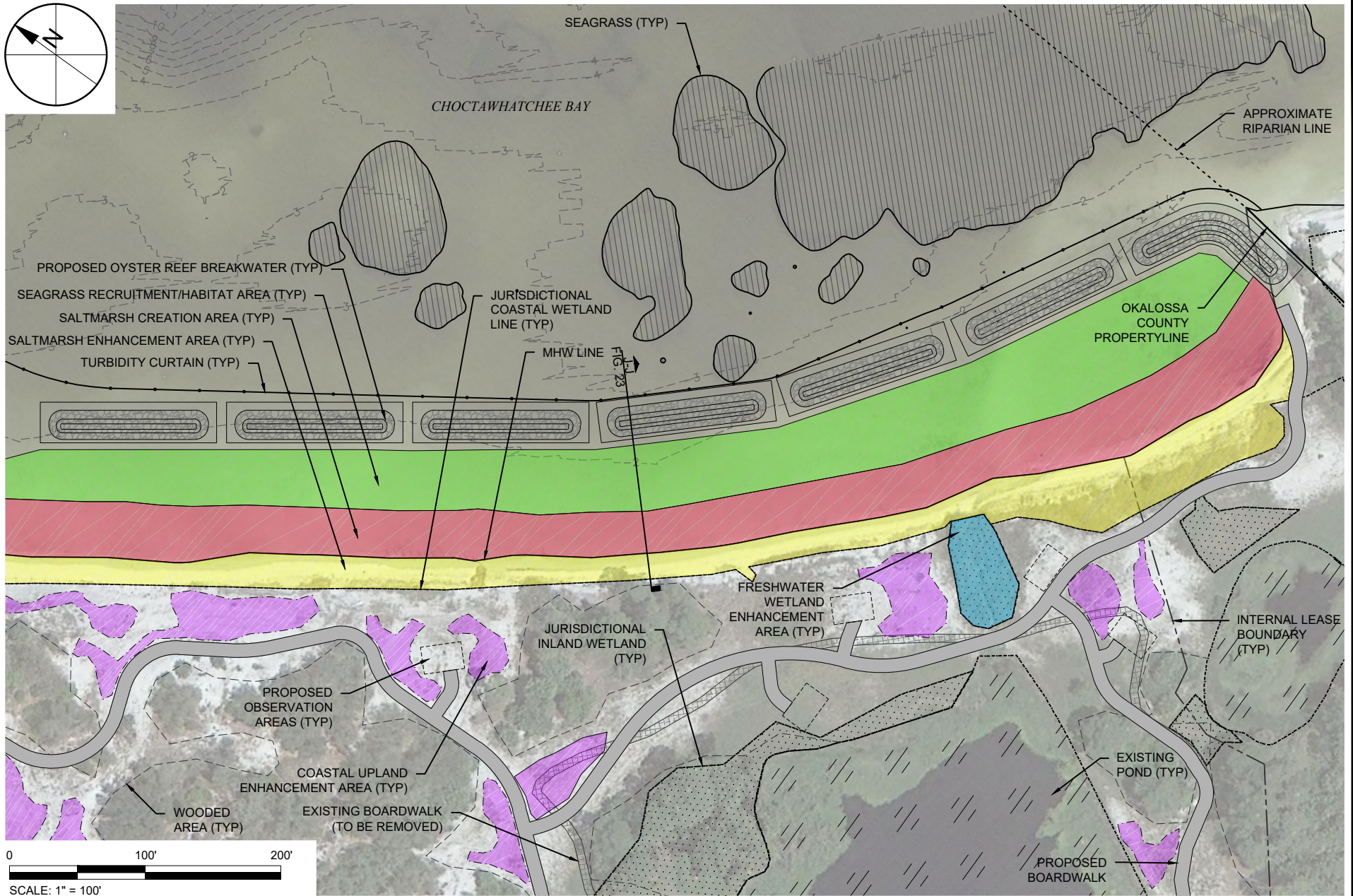
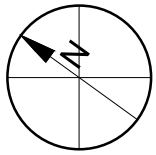
PROJECT	C2014-006/069
DRAWN BY	AF / RLJ
SHEET	7 of 29
DATE	JULY 2017

SEAL	
MATTHEW TRAMMELL P.E.# 69244	DATE

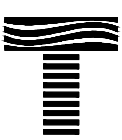








REBECCA JOHNSON X:\SIS\PROJECTS\C2013-055 OKA GREENSHORE BAYWALK\PERMIT\C2014-066P-EASTPLAN.DWG 7/27/2017 2:40:22 PM



**TAYLOR ENGINEERING INC.**  
 1221 AIRPORT ROAD  
 SUITE 210  
 DESTIN, FL 32541  
 CERTIFICATE OF AUTHORIZATION # 4815

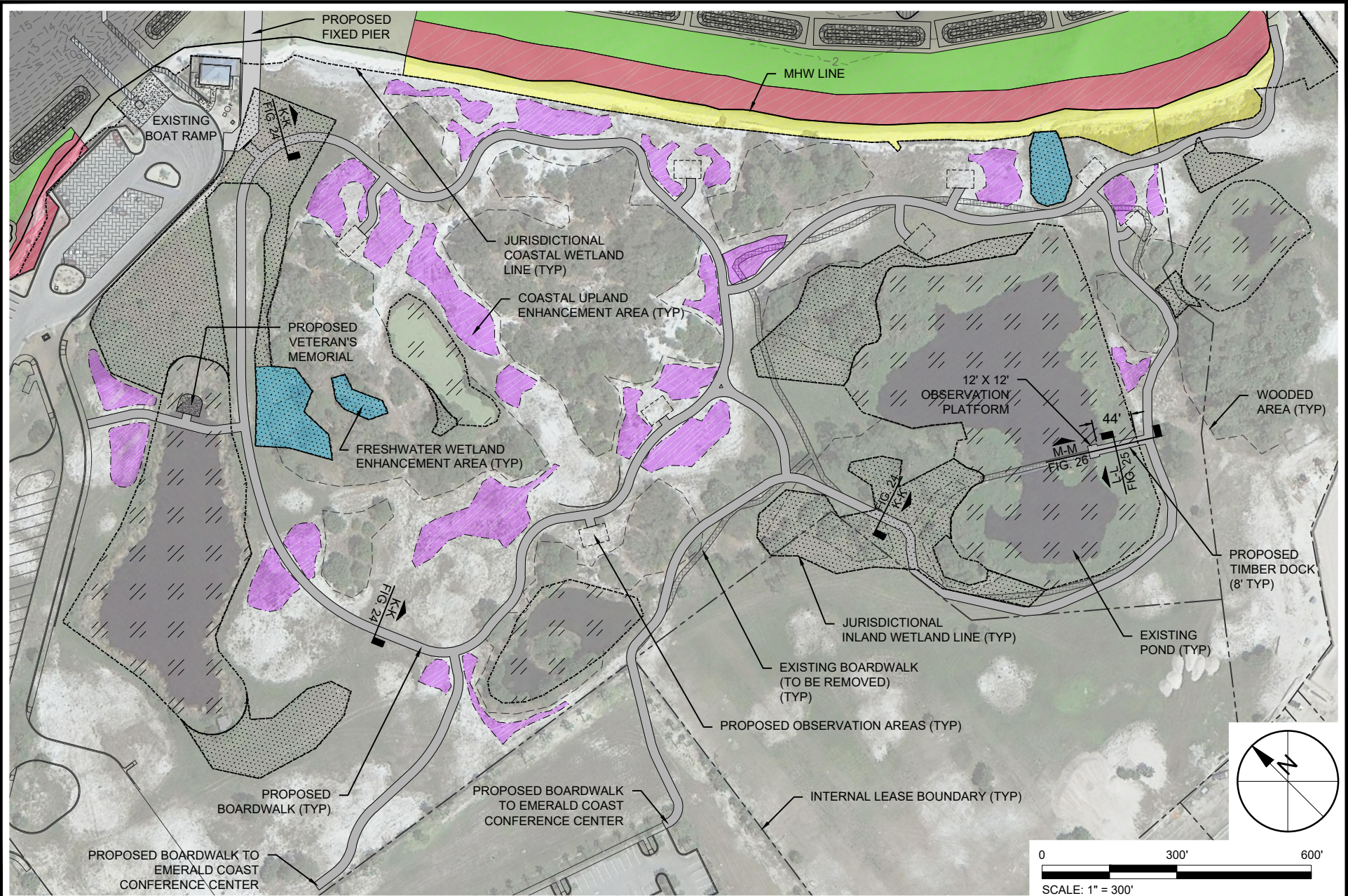
FIGURE 9  
 PROPOSED EAST SHORELINE PLAN VIEW  
 OKALOOSA BAYWALK  
 OKALOOSA COUNTY, FLORIDA

PROJECT	C2014-006/069	SEAL
DRAWN BY	AF / RLJ	
SHEET	9 of 29	
DATE	JULY 2017	
		MATTHEW TRAMMELL P.E.# 69244
		DATE

PRELIMINARY DRAWINGS: THESE DRAWINGS ARE NOT IN FINAL FORM, BUT ARE BEING TRANSMITTED FOR AGENCY REVIEW.



REBECCA JOHNSON X:\SIS\PROJECTS\C2013-055 OKA GREENSHORES\2015 BAYWALK\PERMIT\C2014-069-P-BOARDWALK.DWG 7/27/2017 2:40:33 PM



**TAYLOR ENGINEERING INC.**  
 1221 AIRPORT ROAD  
 SUITE 210  
 DESTIN, FL 32541  
 CERTIFICATE OF AUTHORIZATION # 4815

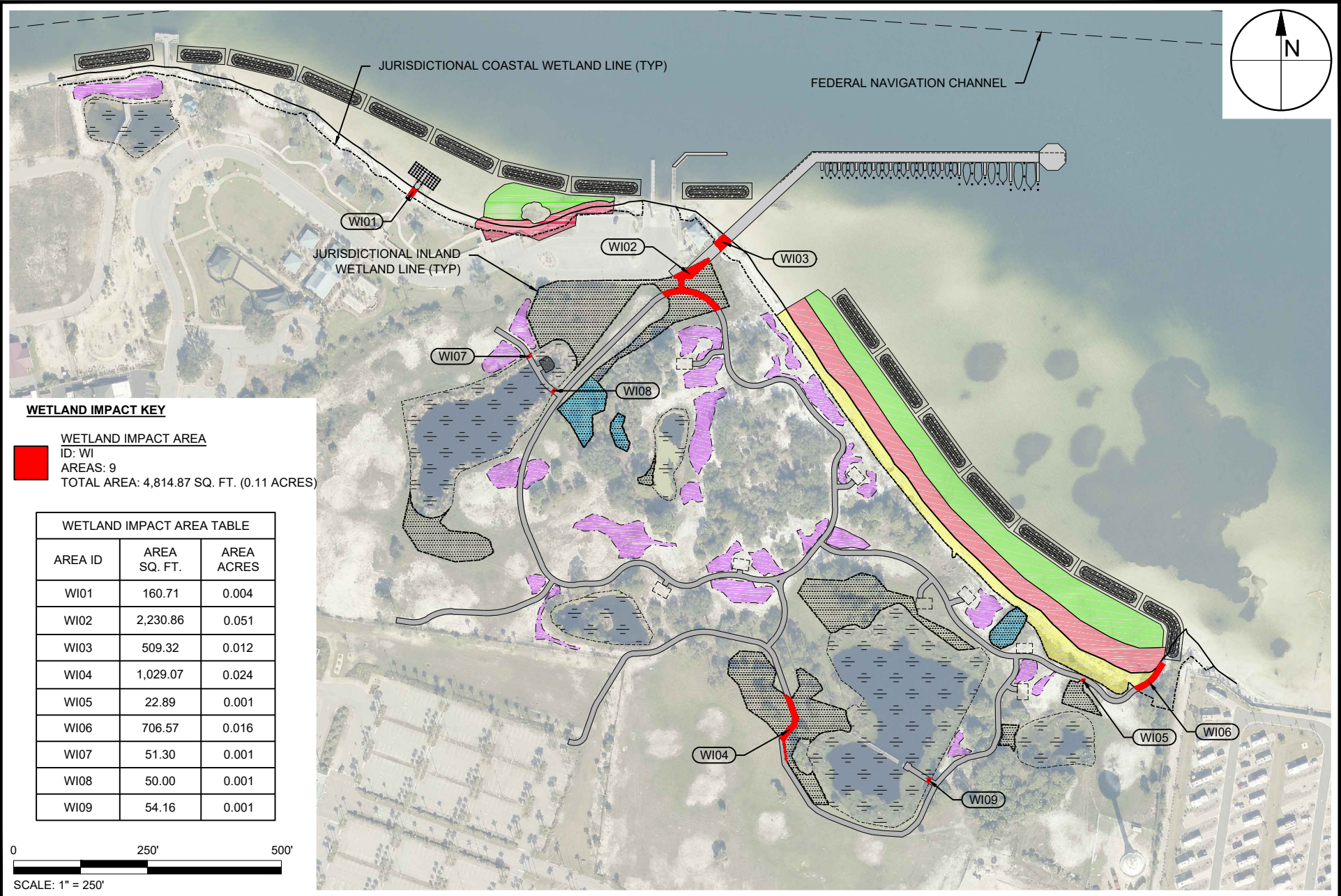
FIGURE 10  
 PROPOSED UPLAND IMPROVEMENTS PLAN VIEW  
 OKALOOSA BAYWALK  
 OKALOOSA COUNTY, FLORIDA

PROJECT	C2014-006/069	SEAL
DRAWN BY	AF / RLJ	
SHEET	10 of 29	
DATE	JULY 2017	MATTHEW TRAMMELL P.E.# 69244
		DATE

PRELIMINARY DRAWINGS: THESE DRAWINGS ARE NOT IN FINAL FORM, BUT ARE BEING TRANSMITTED FOR AGENCY REVIEW.



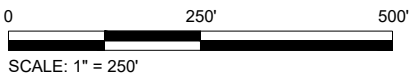
REBECCA JOHNSON X:\S\PROJECTS\C2014-069 OKA GREENSHORE BAYWALK\PERMIT\C2014-069P-IMPACTS.DWG 7/27/2017 2:40:44 PM



**WETLAND IMPACT KEY**

**WETLAND IMPACT AREA**  
 ID: WI  
 AREAS: 9  
 TOTAL AREA: 4,814.87 SQ. FT. (0.11 ACRES)

WETLAND IMPACT AREA TABLE		
AREA ID	AREA SQ. FT.	AREA ACRES
WI01	160.71	0.004
WI02	2,230.86	0.051
WI03	509.32	0.012
WI04	1,029.07	0.024
WI05	22.89	0.001
WI06	706.57	0.016
WI07	51.30	0.001
WI08	50.00	0.001
WI09	54.16	0.001



**TAYLOR ENGINEERING INC.**

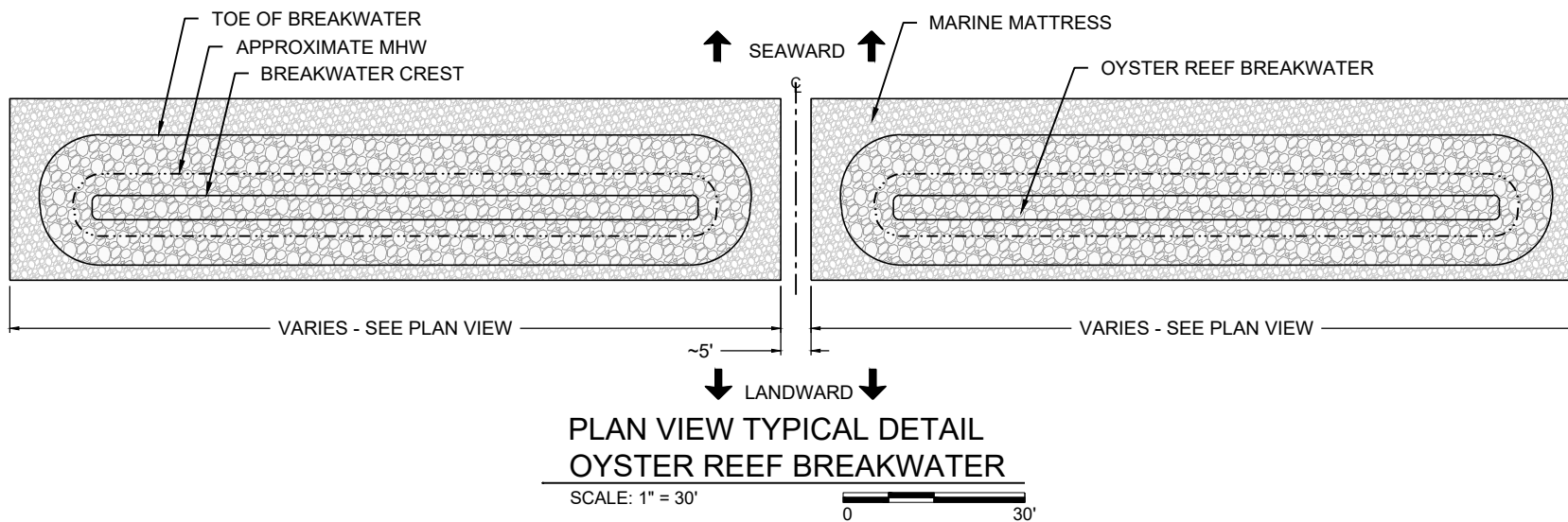
1221 AIRPORT ROAD  
 SUITE 210  
 DESTIN, FL 32541  
 CERTIFICATE OF AUTHORIZATION # 4815

FIGURE 11  
 WETLAND IMPACT MAP  
 OKALOOSA BAYWALK  
 OKALOOSA COUNTY, FLORIDA

PROJECT	C2014-006/069	SEAL
DRAWN BY	AF / RLJ	
SHEET	11 of 29	
DATE	JULY 2017	
		MATTHEW TRAMMELL P.E.# 69244
		DATE

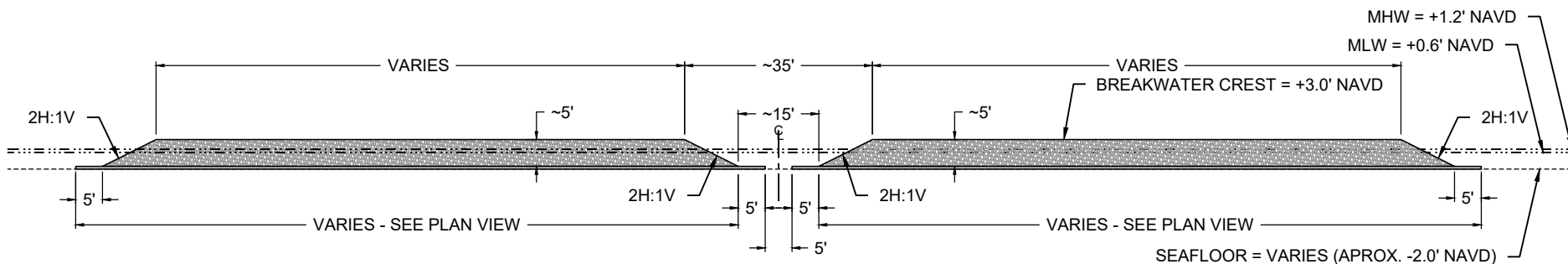
PRELIMINARY DRAWINGS: THESE DRAWINGS ARE NOT IN FINAL FORM, BUT ARE BEING TRANSMITTED FOR AGENCY REVIEW.

REBECCA JOHNSON X:\S\PROJECTS\C2013-053 OKA GREENSHORE BAYWALK\PERMIT\C2014-069 OKA GREENSHORE BAYWALK\PERMIT\C2014-069-P-SHORELINESECT.DWG 7/27/2017 2:40:52 PM



**PLAN VIEW TYPICAL DETAIL  
OYSTER REEF BREAKWATER**

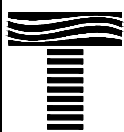
SCALE: 1" = 30'  
0 30'



**ELEVATION VIEW TYPICAL DETAIL  
OYSTER REEF BREAKWATER**

FIG. 7  
A-A

SCALE: 1" = 30'  
0 30'



**TAYLOR ENGINEERING INC.**

1221 AIRPORT ROAD  
SUITE 210  
DESTIN, FL 32541  
CERTIFICATE OF AUTHORIZATION # 4815

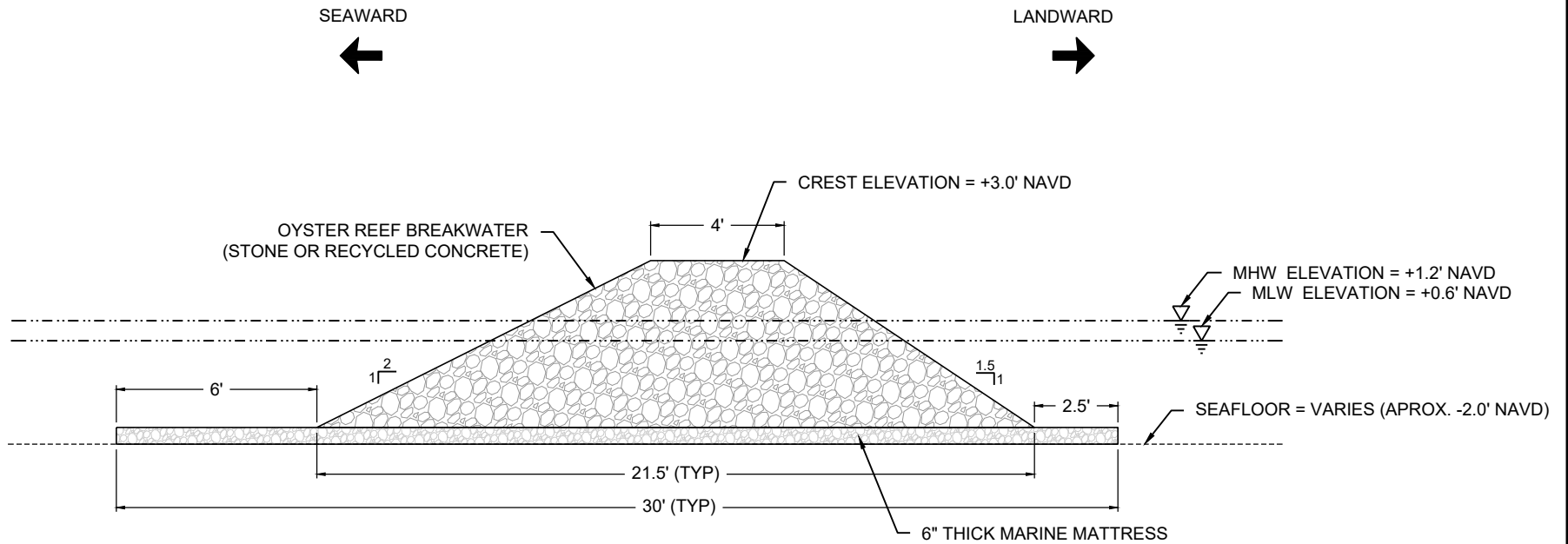
FIGURE 12  
BREAKWATER DETAILS  
OKALOOSA BAYWALK  
OKALOOSA COUNTY, FLORIDA

PROJECT	C2014-006/069
DRAWN BY	AF / RLJ
SHEET	12 of 29
DATE	JULY 2017

SEAL	
MATTHEW TRAMMELL P.E.# 69244	DATE



REBECCA JOHNSON X:\SIS\PROJECTS\C2013-053 OKA GREENSHORES\2015 BAYWALK\PERMIT\C2014-069 OKA GREENSHORE BAYWALK\PERMIT\C2014-069-P-SHORELINESECT.DWG 7/27/2017 2:40:53 PM



SECTION VIEW TYPICAL DETAIL  
OYSTER REEF BREAKWATER

FIG. 7  
B-B  
SCALE: 1" = 5'



**TAYLOR ENGINEERING INC.**

1221 AIRPORT ROAD  
SUITE 210  
DESTIN, FL 32541  
CERTIFICATE OF AUTHORIZATION # 4815

FIGURE 13  
OYSTER REEF BREAKWATER SECTION DETAIL  
OKALOOSA BAYWALK  
OKALOOSA COUNTY, FLORIDA

PROJECT	C2014-006/069
DRAWN BY	AF / RLJ
SHEET	13 of 29
DATE	JULY 2017

SEAL

MATTHEW TRAMMELL P.E.# 69244

DATE



REBECCA JOHNSON X:\S\PROJECTS\C2013-053 OKA GREENSHORE BAYWALK\PERMIT\C2014-069 OKA GREENSHORE BAYWALK\LAUNCH.DWG 7/27/2017 2:40:58 PM

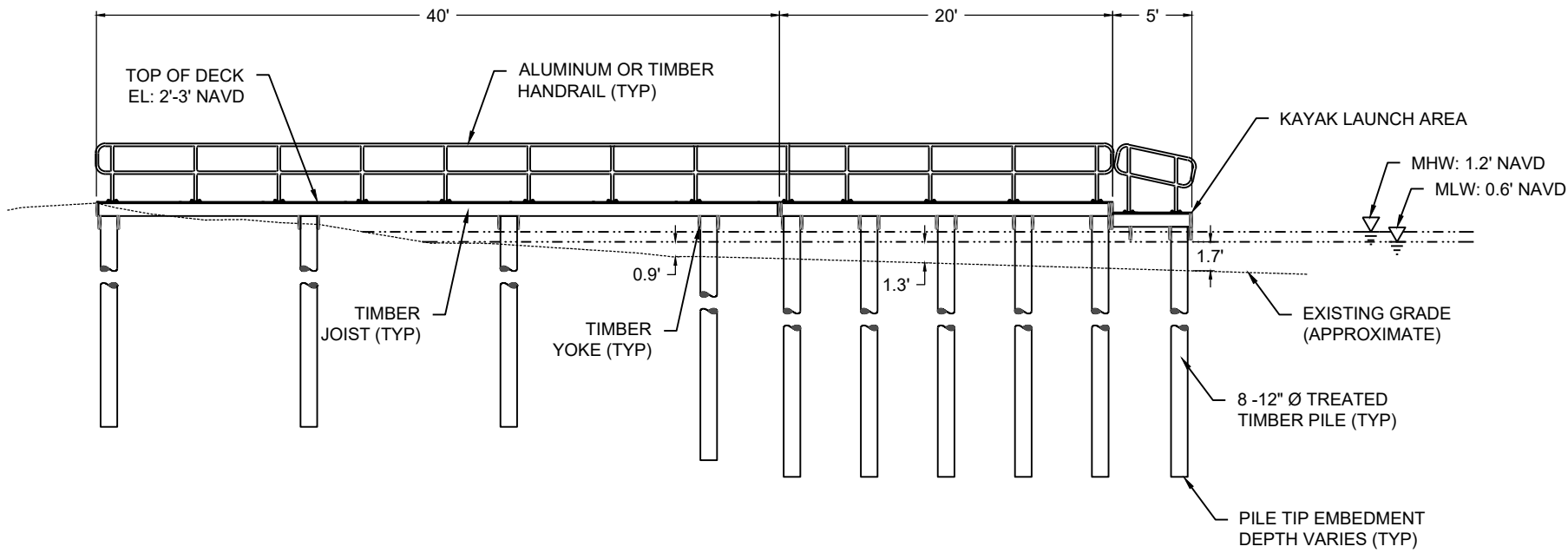
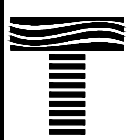


FIG. 7  
C-C

**TYPICAL SECTION VIEW KAYAK LAUNCH**

SCALE: 1" = 10'



**TAYLOR ENGINEERING INC.**  
 1221 AIRPORT ROAD  
 SUITE 210  
 DESTIN, FL 32541  
 CERTIFICATE OF AUTHORIZATION # 4815

FIGURE 14  
 KAYAK LAUNCH SECTION DETAIL C-C  
 OKALOOSA BAYWALK  
 OKALOOSA COUNTY, FLORIDA

PROJECT	C2014-006/069
DRAWN BY	AF / RLJ
SHEET	14 of 29
DATE	JULY 2017

SEAL  
 MATTHEW TRAMMELL P.E.# 69244  
 DATE



REBECCA JOHNSON X:\S\PROJECTS\2015 BAYWALK\2014-069 OKA GREENSHORE BAYWALK\PERMIT\2014-069P-KAYAKLAUNCH.DWG 7/27/2017 2:40:58 PM

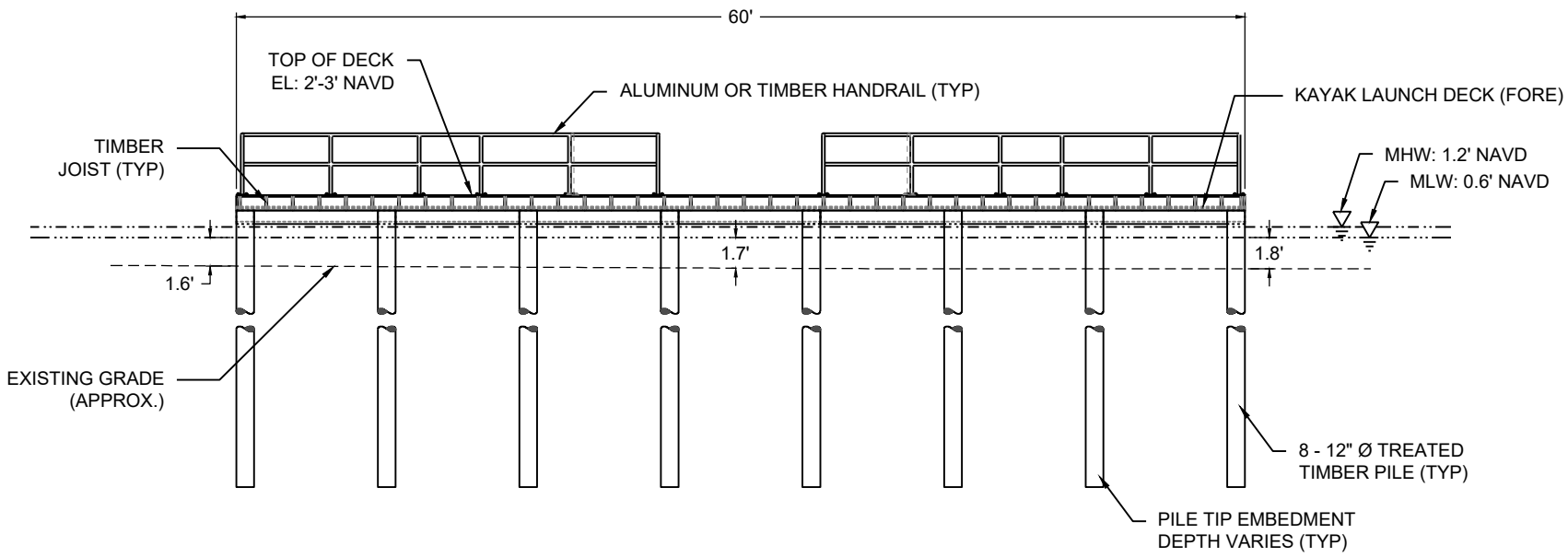
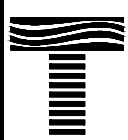
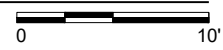


FIG. 7  
D-D

TYPICAL SECTION VIEW KAYAK LAUNCH  
SCALE: 1" = 10'



**TAYLOR ENGINEERING INC.**  
1221 AIRPORT ROAD  
SUITE 210  
DESTIN, FL 32541  
CERTIFICATE OF AUTHORIZATION # 4815

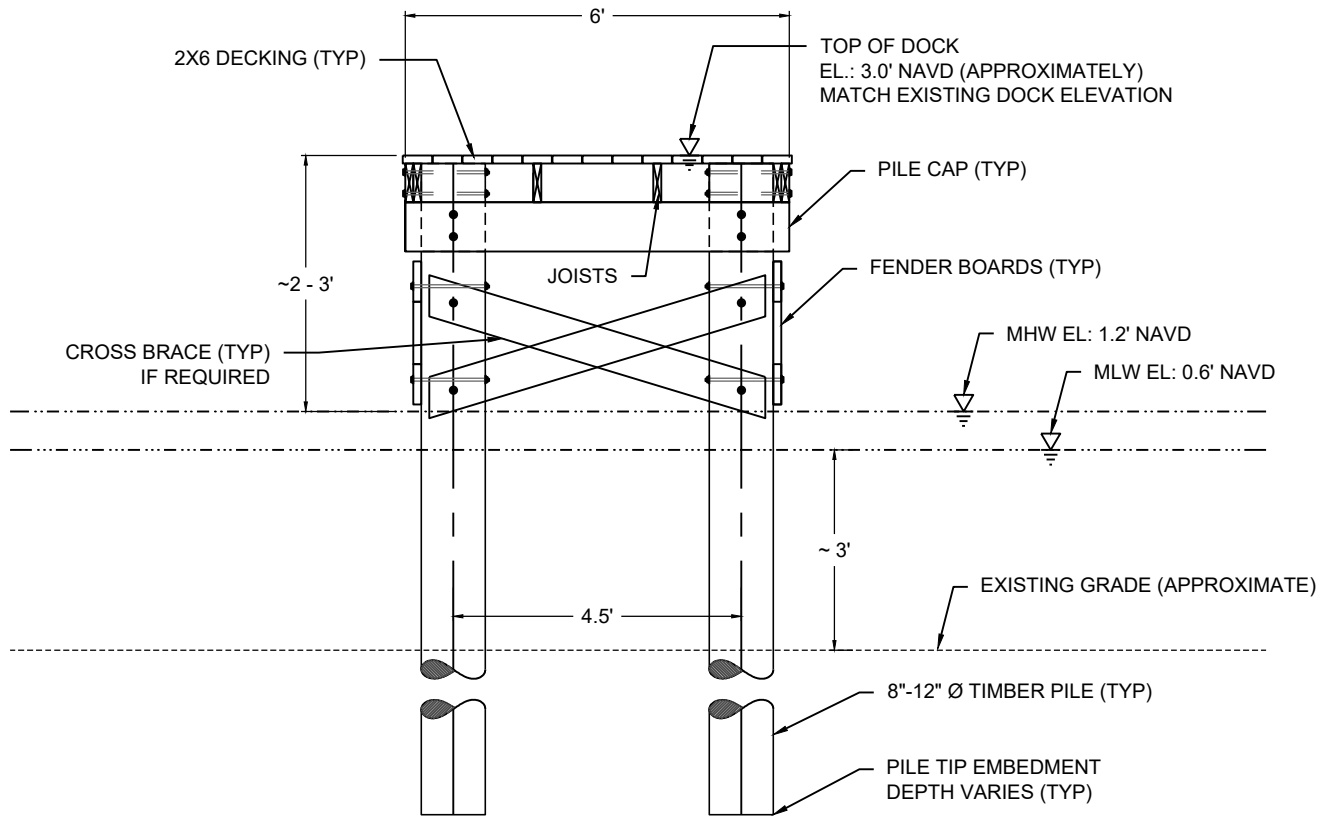
FIGURE 15  
KAYAK LAUNCH SECTION DETAIL D-D  
OKALOOSA BAYWALK  
OKALOOSA COUNTY, FLORIDA

PROJECT	C2014-006/069
DRAWN BY	AF / RLJ
SHEET	15 of 29
DATE	JULY 2017

SEAL	
MATTHEW TRAMMELL P.E.# 69244	DATE

PRELIMINARY DRAWINGS: THESE DRAWINGS ARE NOT IN FINAL FORM, BUT ARE BEING TRANSMITTED FOR AGENCY REVIEW.

REBECCA JOHNSON X:\S\PROJECTS\C2013-053 OKA GREENSHORES\2015 BAYWALK\PERMIT\C2014-069 OKA GREENSHORES BAYWALK\PIER DETAIL.DWG 7/27/2017 2:41:08 PM



F7 & F8  
E-E

**SECTION VIEW TYPICAL DETAIL  
TIMBER DOCK EXTENSION**

SCALE: 1" = 3'



**TAYLOR ENGINEERING INC.**

1221 AIRPORT ROAD  
SUITE 210  
DESTIN, FL 32541  
CERTIFICATE OF AUTHORIZATION # 4815

FIGURE 16  
TIMBER DOCK SECTION VIEW TYPICAL DETAL E-E  
OKALOOSA BAYWALK  
OKALOOSA COUNTY, FLORIDA

PROJECT	C2014-006/069
DRAWN BY	AF / RLJ
SHEET	16 of 29
DATE	JULY 2017

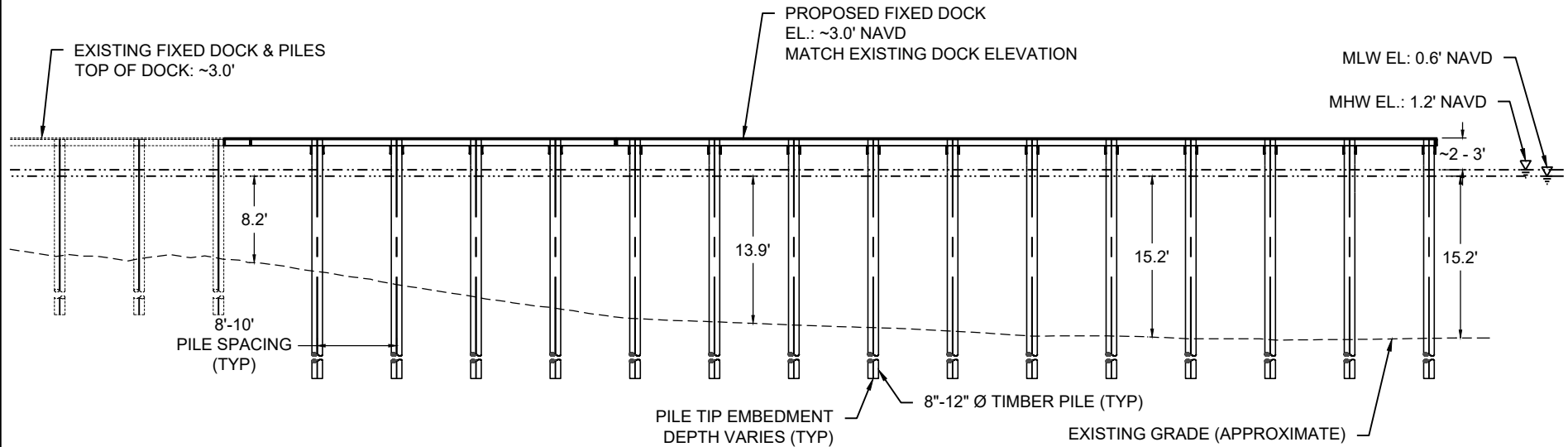
SEAL

MATTHEW TRAMMELL P.E.# 69244

DATE



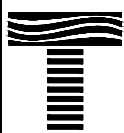
REBECCA JOHNSON X:\S\PROJECTS\C2014-069 OKA GREENSHORES\2015 BAYWALK\PERMIT\C2014-069-P-PIER DETAIL.DWG 7/27/2017 2:41:06 PM



F7 & F8  
F-F

**SECTION VIEW TYPICAL DETAIL  
TIMBER DOCK EXTENSION**

SCALE: 1" = 15'



**TAYLOR ENGINEERING INC.**

1221 AIRPORT ROAD  
SUITE 210  
DESTIN, FL 32541

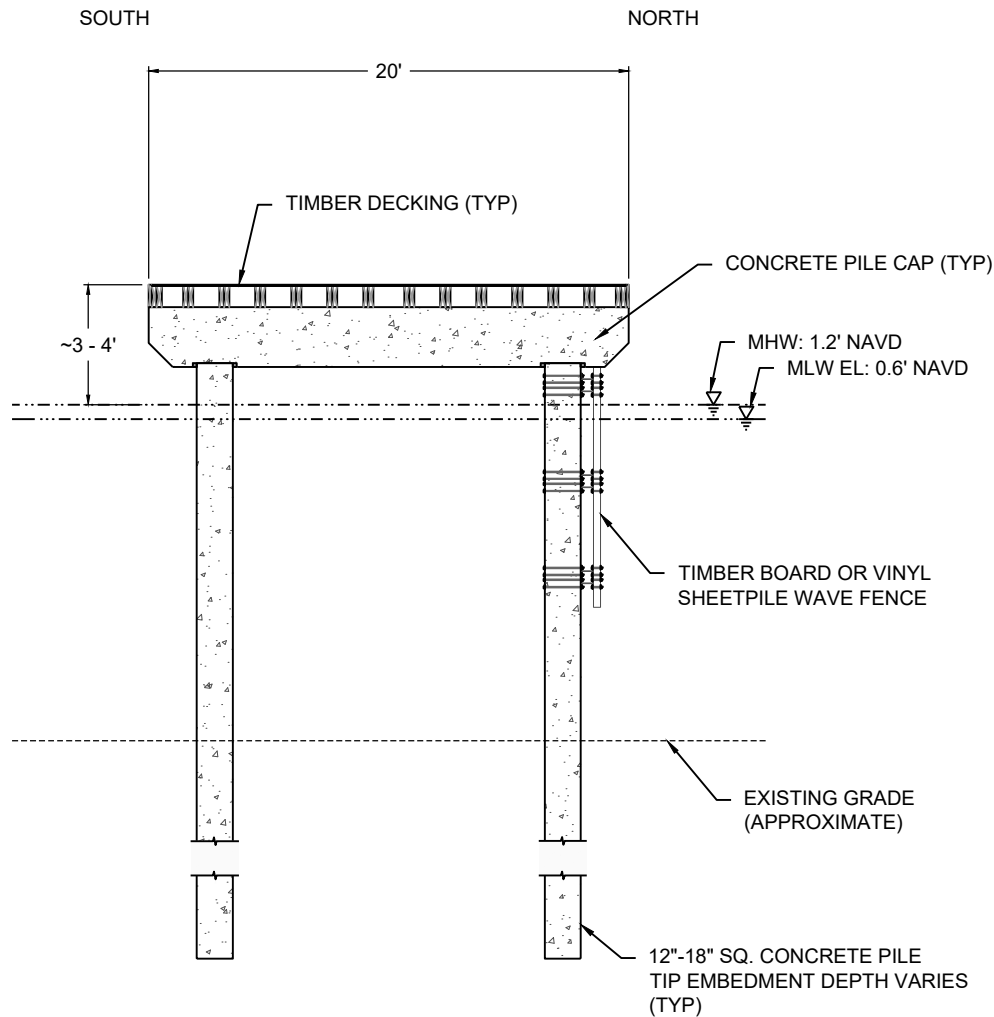
CERTIFICATE OF AUTHORIZATION # 4815

FIGURE 17  
TIMBER DOCK SECTION VIEW TYPICAL DETAIL F-F  
OKALOOSA BAYWALK  
OKALOOSA COUNTY, FLORIDA

PROJECT	C2014-006/069
DRAWN BY	AF / RLJ
SHEET	17 of 29
DATE	JULY 2017

SEAL	
MATTHEW TRAMMELL P.E.# 69244	DATE

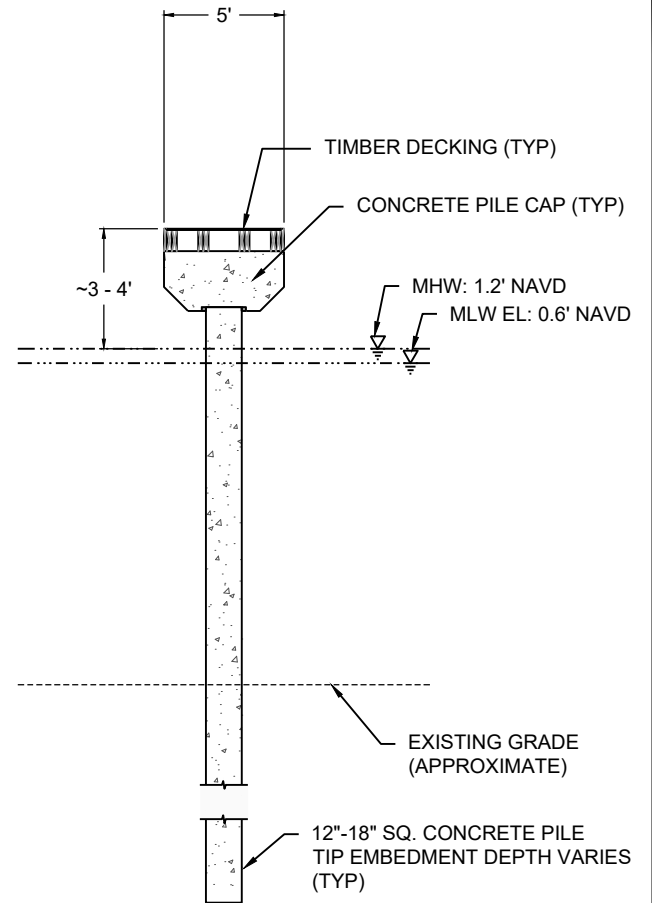
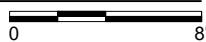
REBECCA JOHNSON X:\S\PROJECTS\C2014-069 OKA GREENSHORE BAYWALK\PERMIT\C2014-069-P-PIER DETAIL.DWG 7/27/2017 2:41:07 PM



**SECTION VIEW TYPICAL DETAIL  
FIXED PIER DOCK**

FIG. 8  
G-G

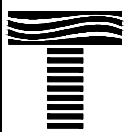
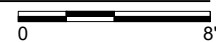
SCALE: 1" = 8'



**SECTION VIEW TYPICAL DETAIL  
FINGER PIER DOCKS**

FIG. 8  
H-H

SCALE: 1" = 8'



**TAYLOR ENGINEERING INC.**

1221 AIRPORT ROAD  
SUITE 210  
DESTIN, FL 32541

CERTIFICATE OF AUTHORIZATION # 4815

FIGURE 18  
FIXED PIER DOCK SECTION VIEW TYPICAL DETAILS G-G & H-H  
OKALOOSA BAYWALK  
OKALOOSA COUNTY, FLORIDA

PROJECT	C2014-006/069
DRAWN BY	AF / RLJ
SHEET	18 of 29
DATE	JULY 2017

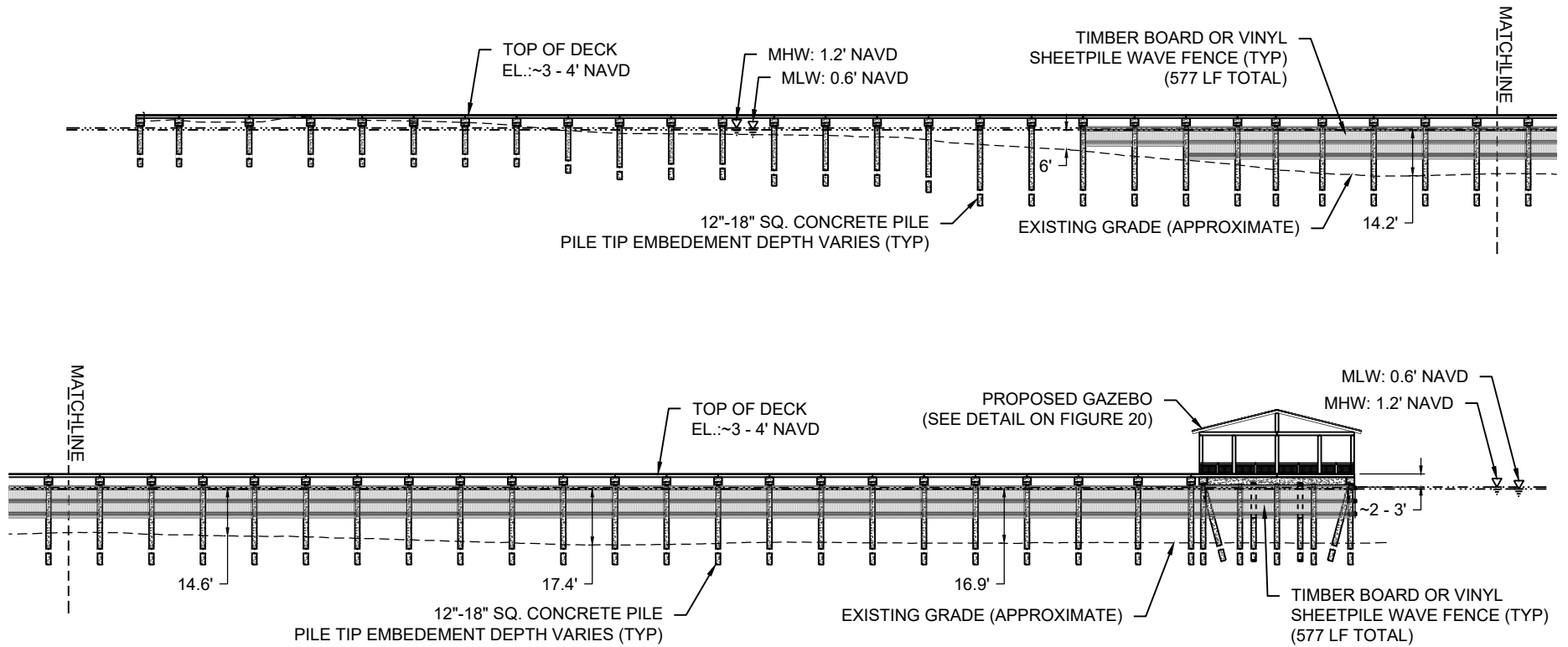
SEAL

MATTHEW TRAMMELL P.E.# 69244

DATE



REBECCA JOHNSON X:\SIS\PROJECTS\C2013-053 OKA GREENSHORES\2015 BAYWALK\PERMIT\C2014-069 OKA GREENSHORES BAYWALK\PIER DETAIL.DWG 7/27/2017 2:41:07 PM



**SECTION VIEW TYPICAL DETAIL  
FIXED PIER DOCK**

FIG. 8  
I-I  
SCALE: 1" = 50'

**TAYLOR ENGINEERING INC.**

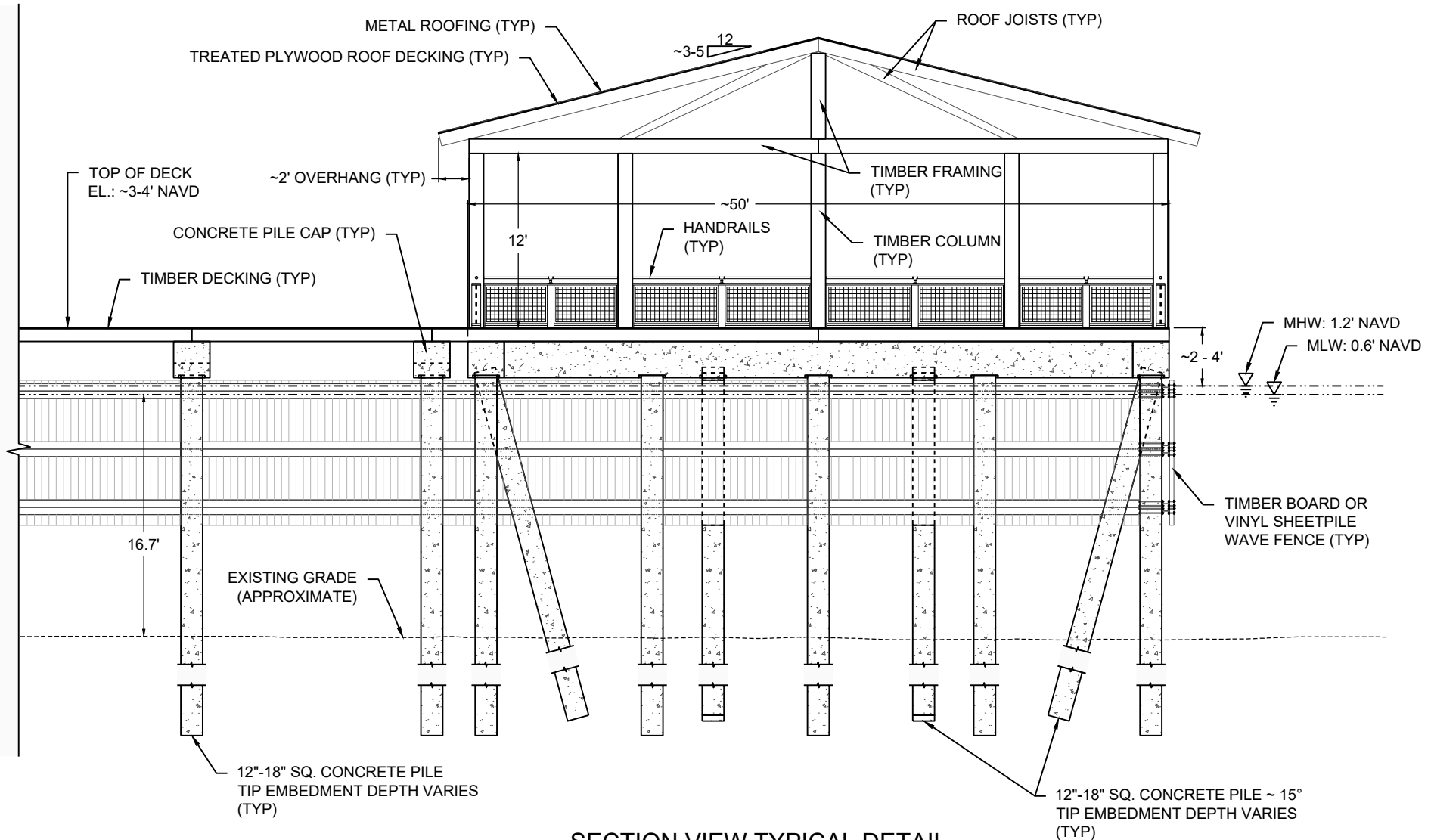
1221 AIRPORT ROAD  
SUITE 210  
DESTIN, FL 32541  
CERTIFICATE OF AUTHORIZATION # 4815

FIGURE 19  
FIXED PIER DOCK SECTION VIEW TYPICAL DETAIL I-I  
OKALOOSA BAYWALK  
OKALOOSA COUNTY, FLORIDA

PROJECT	C2014-006/069	SEAL
DRAWN BY	AF / RLJ	
SHEET	19 of 29	
DATE	JULY 2017	
	MATTHEW TRAMMELL P.E.# 69244	DATE

PRELIMINARY DRAWINGS: THESE DRAWINGS ARE NOT IN FINAL FORM, BUT ARE BEING TRANSMITTED FOR AGENCY REVIEW.

REBECCA JOHNSON X:\S\PROJECTS\C2013-053 OKA GREENSHORE BAYWALK\PERMIT\C2014-069 OKA GREENSHORE BAYWALK\PIER DETAIL.DWG 7/27/2017 2:41:08 PM



**SECTION VIEW TYPICAL DETAIL  
FIXED PIER DOCK GAZEBO**

SCALE: 1" = 10'



**TAYLOR ENGINEERING INC.**

1221 AIRPORT ROAD  
SUITE 210  
DESTIN, FL 32541

CERTIFICATE OF AUTHORIZATION # 4815

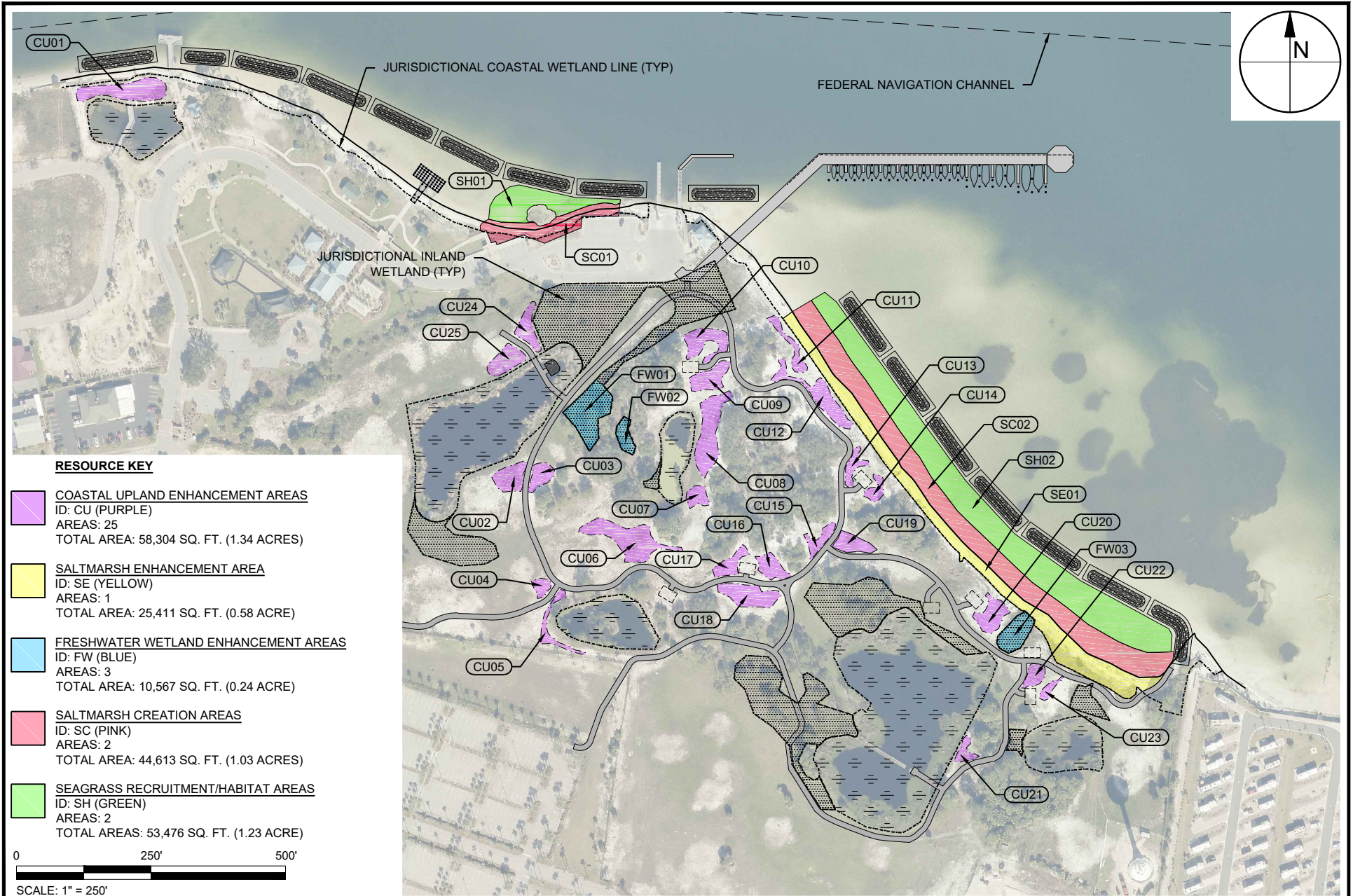
FIGURE 20  
FIXED PIER DOCK GAZEBO SECTION VIEW TYPICAL DETAIL  
OKALOOSA BAYWALK  
OKALOOSA COUNTY, FLORIDA

PROJECT	C2014-006/069
DRAWN BY	AF / RLJ
SHEET	20 of 29
DATE	JULY 2017

SEAL	
MATTHEW TRAMMELL P.E.# 69244	DATE



REBECCA JOHNSON X:\S\PROJECTS\C2014-069 OKA GREENSHORE BAYWALK\PERMIT\C2014-069-P-RESTORATION.DWG 7/27/2017 2:41:19 PM



**RESOURCE KEY**

- COASTAL UPLAND ENHANCEMENT AREAS**  
 ID: CU (PURPLE)  
 AREAS: 25  
 TOTAL AREA: 58,304 SQ. FT. (1.34 ACRES)
- SALTMARSH ENHANCEMENT AREA**  
 ID: SE (YELLOW)  
 AREAS: 1  
 TOTAL AREA: 25,411 SQ. FT. (0.58 ACRE)
- FRESHWATER WETLAND ENHANCEMENT AREAS**  
 ID: FW (BLUE)  
 AREAS: 3  
 TOTAL AREA: 10,567 SQ. FT. (0.24 ACRE)
- SALTMARSH CREATION AREAS**  
 ID: SC (PINK)  
 AREAS: 2  
 TOTAL AREA: 44,613 SQ. FT. (1.03 ACRES)
- SEAGRASS RECRUITMENT/HABITAT AREAS**  
 ID: SH (GREEN)  
 AREAS: 2  
 TOTAL AREAS: 53,476 SQ. FT. (1.23 ACRE)

0 250' 500'  
 SCALE: 1" = 250'

**TAYLOR ENGINEERING INC.**  
 1221 AIRPORT ROAD  
 SUITE 210  
 DESTIN, FL 32541  
 CERTIFICATE OF AUTHORIZATION # 4815

FIGURE 21  
 ENVIRONMENTAL RESOURCES IMPROVEMENTS MAP  
 OKALOOSA BAYWALK  
 OKALOOSA COUNTY, FLORIDA

PROJECT	C2014-006/069	SEAL
DRAWN BY	AF / RLJ	
SHEET	21 of 29	
DATE	JULY 2017	
		MATTHEW TRAMMELL P.E.# 69244
		DATE

PRELIMINARY DRAWINGS: THESE DRAWINGS ARE NOT IN FINAL FORM, BUT ARE BEING TRANSMITTED FOR AGENCY REVIEW.

RESOURCES AREA TABLE		
AREA ID	AREA SQ. FT.	AREA ACRES
CU01	4,905.95	0.11
CU02	2,483.82	0.06
CU03	1,659.52	0.04
CU04	889.89	0.02
CU05	1,602.14	0.04
CU06	6,137.69	0.14
CU07	1,292.96	0.03
CU08	5,240.61	0.12
CU09	2,511.00	0.06
CU10	3,098.17	0.07
CU11	1,601.62	0.04
CU12	3,878.71	0.09
CU13	1,355.37	0.03
CU14	1,045.66	0.02
CU15	1,377.45	0.03
CU16	1,903.47	0.04
CU17	1,694.89	0.04
CU18	3,636.00	0.08
CU19	1,976.43	0.05

RESOURCES AREA TABLE		
AREA ID	AREA SQ. FT.	AREA ACRES
CU20	2,576.78	0.06
CU21	1,008.46	0.02
CU22	1,266.67	0.03
CU23	687.51	0.02
CU24	2,024.59	0.05
CU25	2,448.62	0.06
FW01	5,966.47	0.14
FW02	1,516.69	0.03
FW03	3,084.00	0.07
SC01	7,650.67	0.18
SC02	36,962.07	0.85
SE01	25,410.91	0.58
SH01	8,157.13	0.19
SH02	45,318.81	1.04

REBECCA JOHNSON X:\SIS\PROJECTS\C2013-053 OKA GREENSHORES\2015 BAYWALK\PERMIT\C2014-069 OKA GREENSHORE BAYWALK\PERMIT\C2014-069-P-RESTORATION.DWG 7/27/2017 2:41:19 PM



**TAYLOR ENGINEERING INC.**

1221 AIRPORT ROAD  
 SUITE 210  
 DESTIN, FL 32541  
 CERTIFICATE OF AUTHORIZATION # 4815

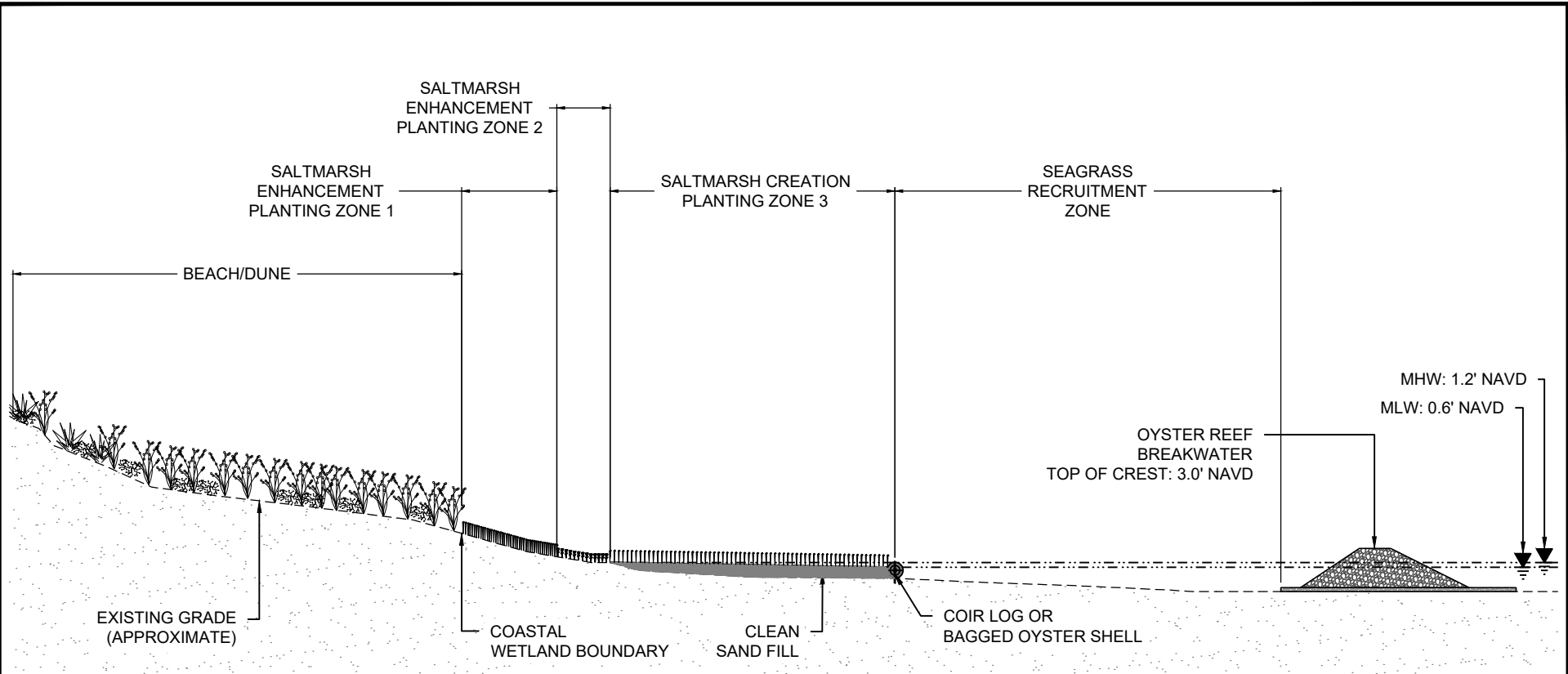
FIGURE 22  
 ENVIRONMENTAL RESOURCES IMPROVEMENTS TABLE  
 OKALOOSA BAYWALK  
 OKALOOSA COUNTY, FLORIDA

PROJECT	C2014-006/069
DRAWN BY	AF / RLJ
SHEET	22 of 29
DATE	JULY 2017

SEAL	
MATTHEW TRAMMELL P.E.# 69244	DATE



REBECCA JOHNSON X:\SIS\PROJECTS\C2014-069 OKA GREENSHORE BAYWALK\PERMIT\C2014-069-P-RESTOR-SECT DWG 7/27/2017 2:41:29 PM

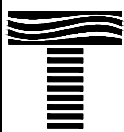


PLANTING SCHEDULE				
ZONE	COMMON NAME	SCIENTIFIC NAME	SIZE	DENSITY
1	MARSH-HAY CORDGRASS	<i>Spartina patens</i>	2" LINER	12" ON CENTER
2	BLACK NEEDLERUSH	<i>Juncus roemerianus</i>	2" LINER	12" ON CENTER
3	SMOOTH CORDGRASS	<i>Spartina alterniflora</i>	2" LINER	12" ON CENTER



**LIVING SHORELINE TYPICAL CROSS SECTION**

NOT TO SCALE



**TAYLOR ENGINEERING INC.**

1221 AIRPORT ROAD  
SUITE 210  
DESTIN, FL 32541  
CERTIFICATE OF AUTHORIZATION # 4815

FIGURE 23  
LIVING SHORELINE TYPICAL CROSS SECTION  
OKALOOSA BAYWALK  
OKALOOSA COUNTY, FLORIDA

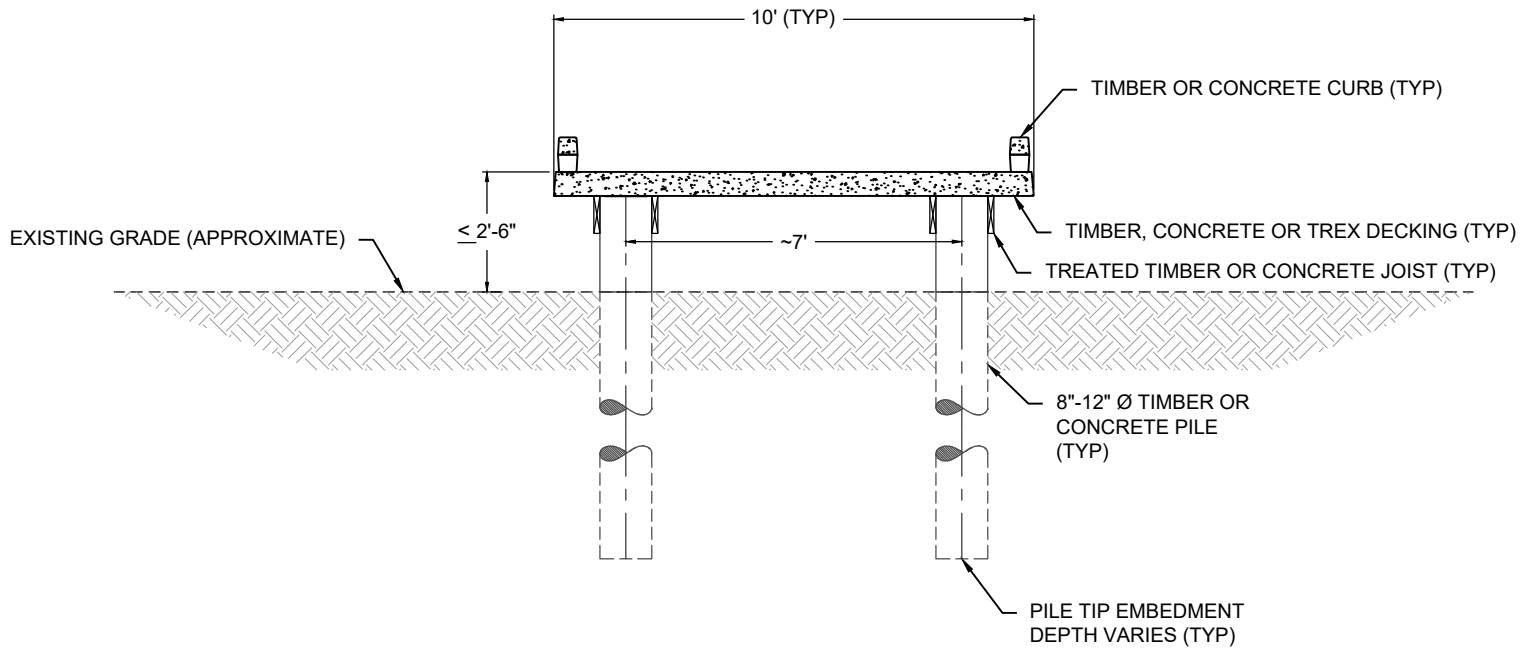
PROJECT	C2014-006/069
DRAWN BY	AF / RLJ
SHEET	23 of 29
DATE	JULY 2017

SEAL

MATTHEW TRAMMELL P.E.# 69244

DATE

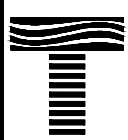
REBECCA JOHNSON X:\S\PROJECTS\C2013-053 OKA GREENSHORES\2015 BAYWALK\PERMIT\C2014-069 OKA GREENSHORE BAYWALK-DETAIL.DWG 7/27/2017 2:41:31 PM



**TYPICAL SECTION DETAIL  
BOARDWALK**

FIG. 10  
K-K

SCALE: 1" = 4'



**TAYLOR ENGINEERING INC.**  
 1221 AIRPORT ROAD  
 SUITE 210  
 DESTIN, FL 32541  
 CERTIFICATE OF AUTHORIZATION # 4815

FIGURE 24  
 BOARDWALK TYPICAL SECTION DETAIL L-L  
 OKALOOSA BAYWALK  
 OKALOOSA COUNTY, FLORIDA

PROJECT	C2014-006/069
DRAWN BY	AF / RLJ
SHEET	24 of 29
DATE	JULY 2017

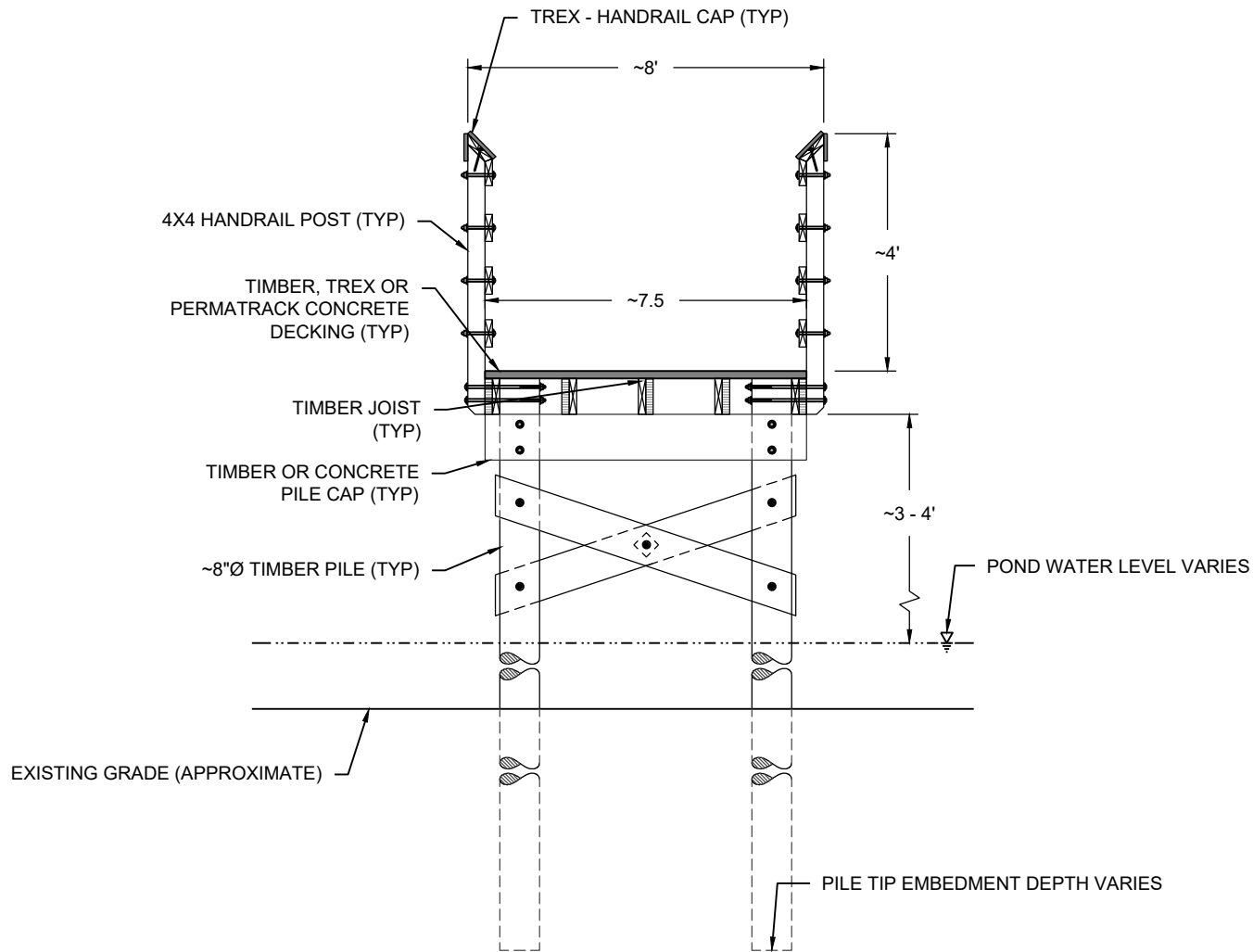
SEAL

MATTHEW TRAMMELL P.E.# 69244

DATE



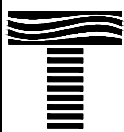
REBECCA JOHNSON X:\S\PROJECTS\C2013-053 OKA GREENSHORES\2015 BAYWALK\PERMIT\C2014-069 OKA GREENSHORE BAYWALK\PERMIT\C2014-069-PONDDOCK.DWG 7/27/2017 2:41:37 PM



**SECTION VIEW TYPICAL DETAIL  
TIMBER DOCK AT POND**

FIG. 10  
L-L

SCALE: 1" = 3'



**TAYLOR ENGINEERING INC.**

1221 AIRPORT ROAD  
SUITE 210  
DESTIN, FL 32541  
CERTIFICATE OF AUTHORIZATION # 4815

FIGURE 25  
TIMBER DOCK AT POND TYPICAL SECTION VIEW DETAIL L-L  
OKALOOSA BAYWALK  
OKALOOSA COUNTY, FLORIDA

PROJECT	C2014-006/069
DRAWN BY	AF / RLJ
SHEET	25 of 29
DATE	JULY 2017

SEAL	
MATTHEW TRAMMELL P.E.# 69244	DATE

REBECCA JOHNSON X:\S\PROJECTS\C2013-053 OKA GREENSHORES\2015 BAYWALK\C2014-069 OKA GREENSHORE BAYWALK\PERMIT\C2014-069-P-POOND\DOCK.DWG 7/27/2017 2:41:37 PM

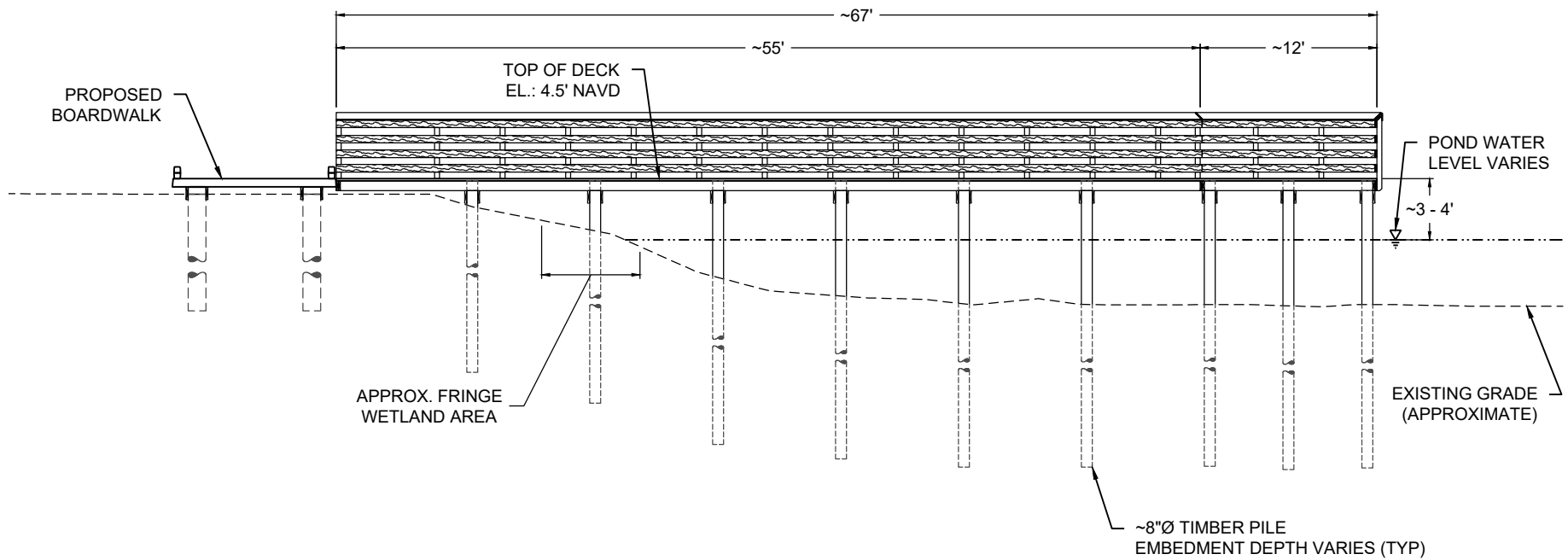
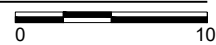


FIG. 10  
M-M

SECTION VIEW TYPICAL DETAIL  
TIMBER DOCK AT POND

SCALE: 1" = 10'



**TAYLOR ENGINEERING INC.**

1221 AIRPORT ROAD  
SUITE 210  
DESTIN, FL 32541  
CERTIFICATE OF AUTHORIZATION # 4815

FIGURE 26  
TIMBER DOCK AT POND TYPICAL SECTION VIEW DETAIL M-M  
OKALOOSA BAYWALK  
OKALOOSA COUNTY, FLORIDA

PROJECT	C2014-006/069
DRAWN BY	AF / RLJ
SHEET	26 of 29
DATE	JULY 2017

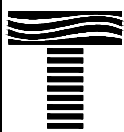
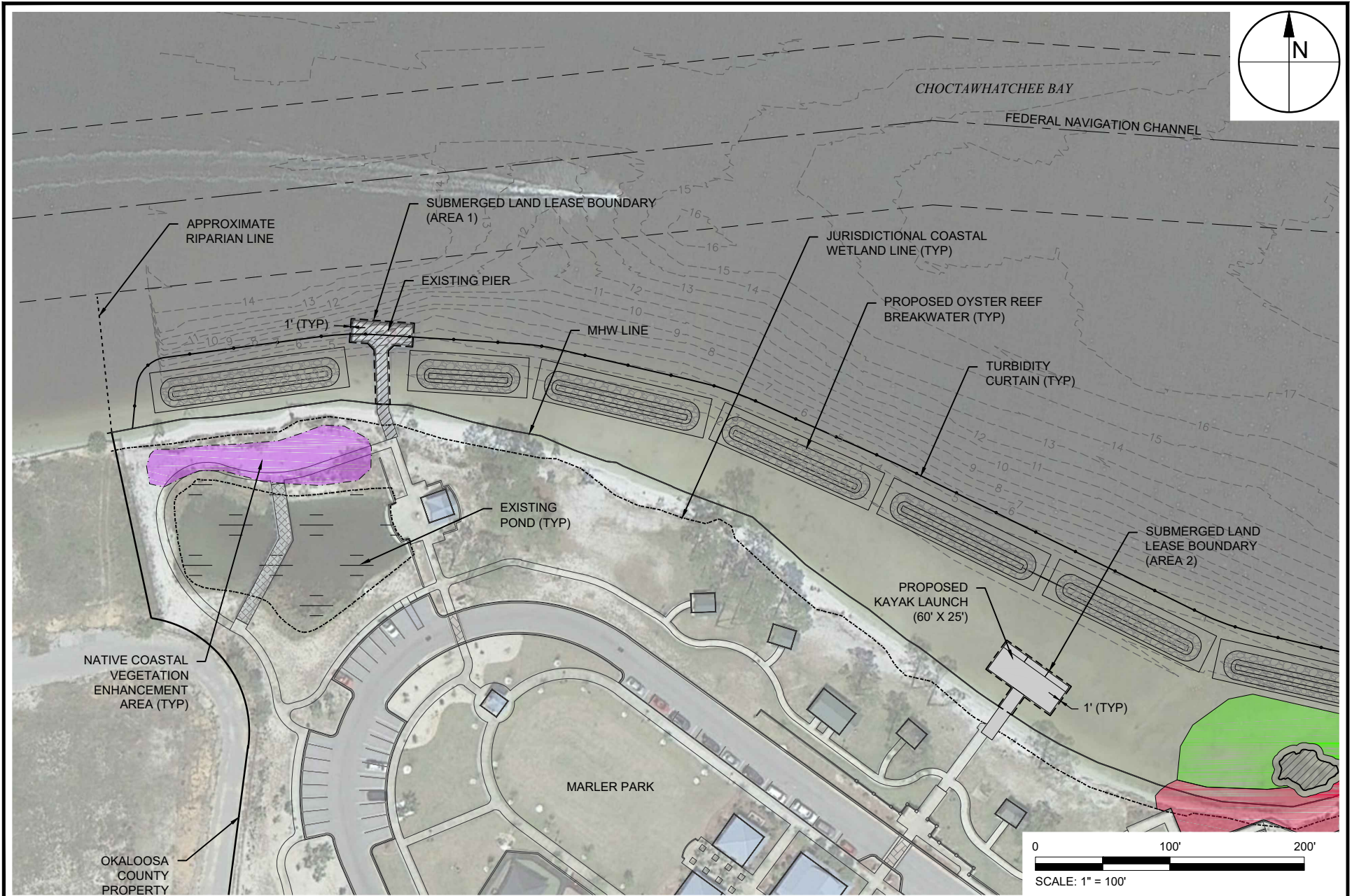
SEAL

MATTHEW TRAMMELL P.E.# 69244

DATE



REBECCA JOHNSON X:\SIS\PROJECTS\C2013-055 OKA GREENSHORES\2015 BAYWALK\PERMIT\C2014-069 OKA GREENSHORE BAYWALK\PERMIT\C2014-069-P-LANDLEASE WEST.DWG 7/27/2017 2:41:47 PM



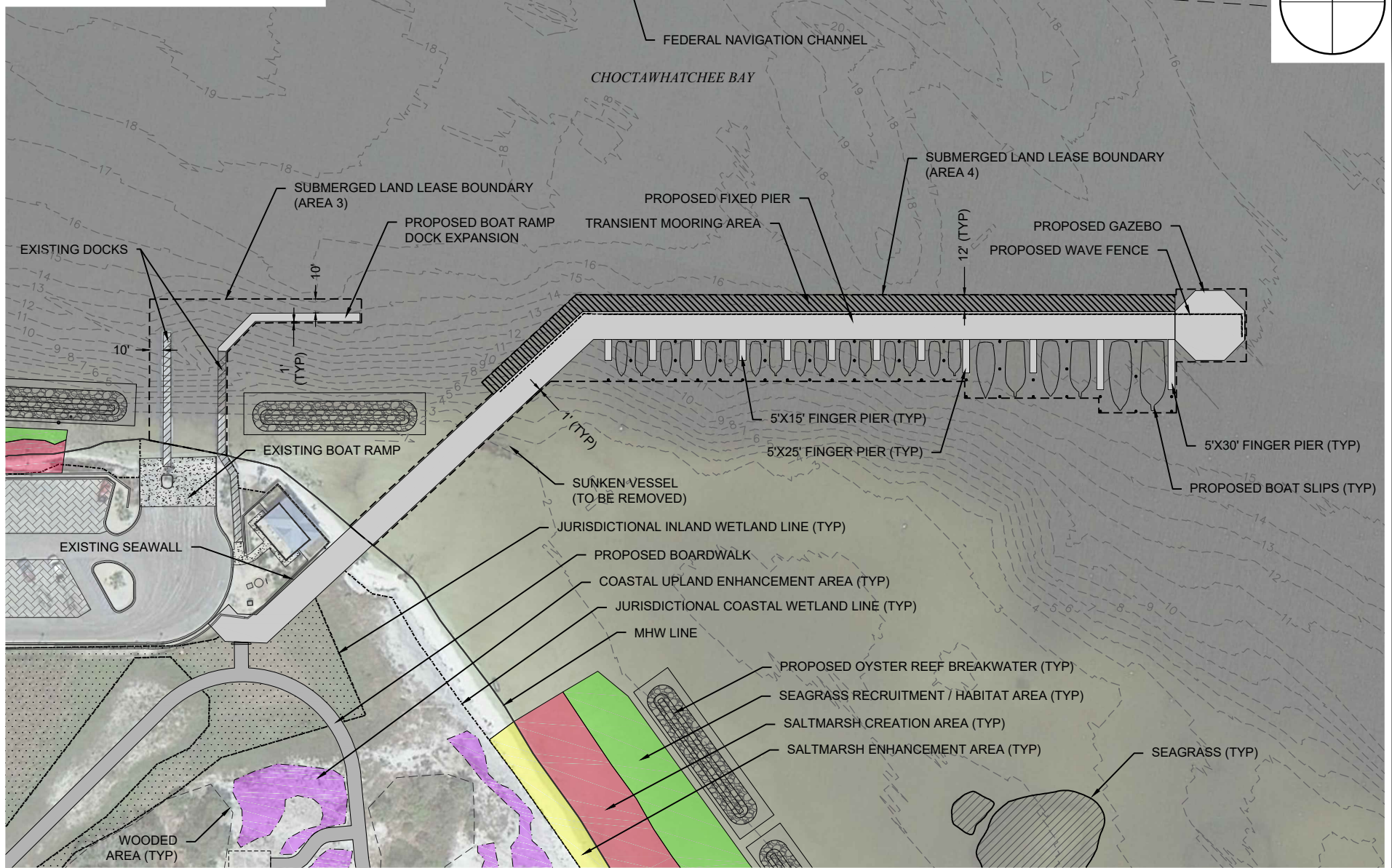
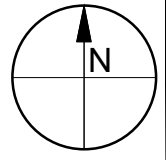
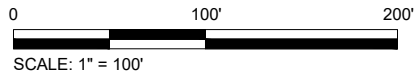
**TAYLOR ENGINEERING INC.**

1221 AIRPORT ROAD  
SUITE 210  
DESTIN, FL 32541  
CERTIFICATE OF AUTHORIZATION # 4815

FIGURE 27  
PROPOSED WEST SUBMERGED LAND LEASE AREAS  
OKALOOSA BAYWALK  
OKALOOSA COUNTY, FLORIDA

PROJECT	C2014-006/069
DRAWN BY	AF / RLJ
SHEET	27 of 29
DATE	JULY 2017

SEAL	
MATTHEW TRAMMELL P.E.# 69244	DATE



REBECCA JOHNSON X:\SIS\PROJECTS\C2014-069 OKA GREENSHORE BAYWALK\PERMIT\C2014-069P-LANDLEASE.DWG 7/27/2017 2:41:57 PM



**TAYLOR ENGINEERING INC.**  
 1221 AIRPORT ROAD  
 SUITE 210  
 DESTIN, FL 32541  
 CERTIFICATE OF AUTHORIZATION # 4815

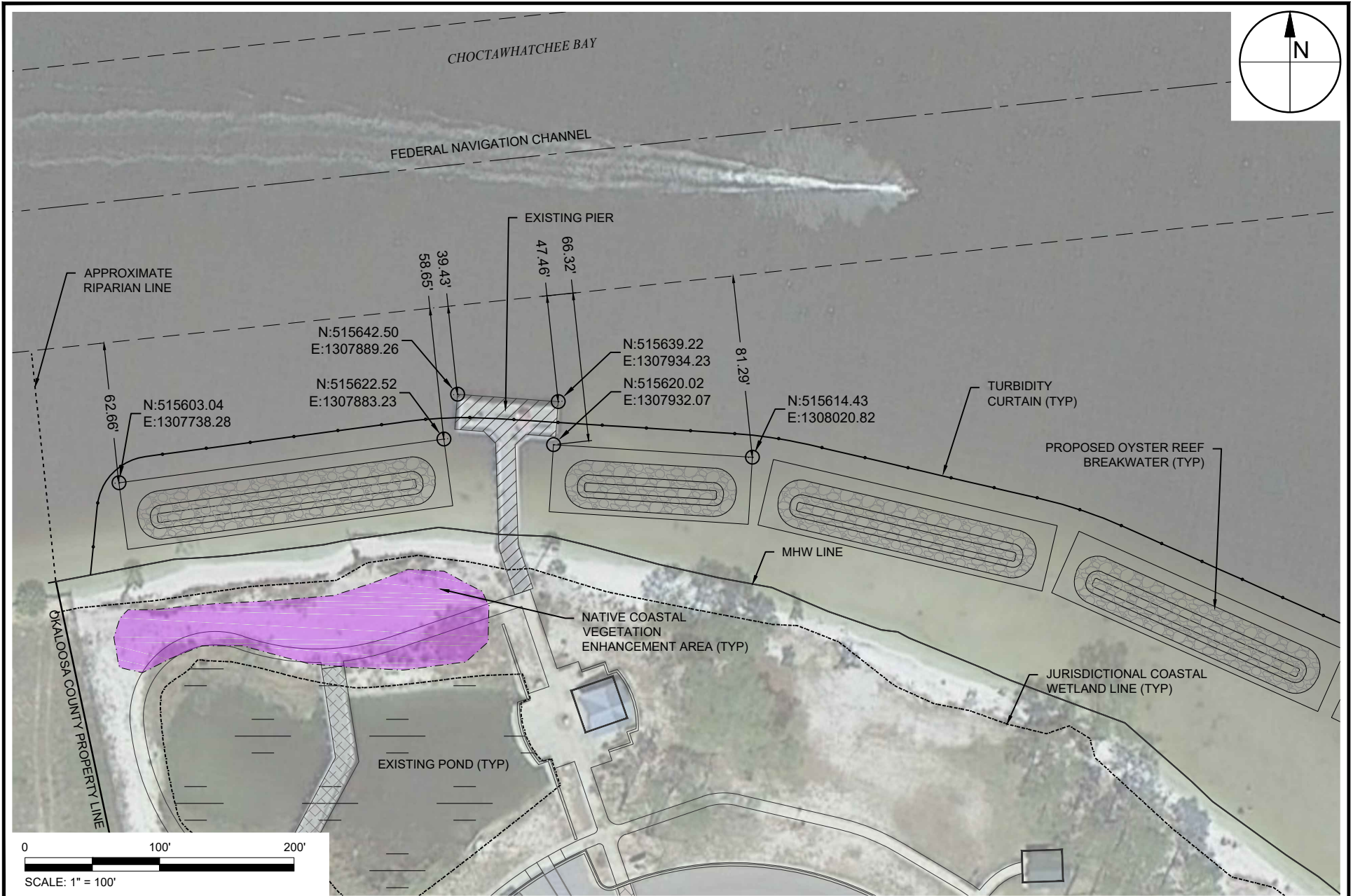
FIGURE 28  
 PROPOSED CENTRAL SUBMERGED LAND LEASE AREAS  
 OKALOOSA BAYWALK  
 OKALOOSA COUNTY, FLORIDA

PROJECT	C2014-006/069	SEAL
DRAWN BY	AF / RLJ	
SHEET	28 of 29	
DATE	JULY 2017	
		MATTHEW TRAMMELL P.E.# 69244
		DATE

PRELIMINARY DRAWINGS: THESE DRAWINGS ARE NOT IN FINAL FORM, BUT ARE BEING TRANSMITTED FOR AGENCY REVIEW.



REBECCA JOHNSON X:\SIS\PROJECTS\C2014-069 OKALOOSA COUNTY BAYWALK\PERMIT\C2014-069P-WEST-NAV-DIST.DWG 7/27/2017 2:41:58 PM




**TAYLOR ENGINEERING INC.**  
 1221 AIRPORT ROAD  
 SUITE 210  
 DESTIN, FL 32541  
 CERTIFICATE OF AUTHORIZATION # 4815

FIGURE 29  
 NAVIGATION DISTANCES  
 OKALOOSA BAYWALK  
 OKALOOSA COUNTY, FLORIDA

PROJECT	C2014-006/069	SEAL
DRAWN BY	AF / RLJ	
SHEET	29 of 29	
DATE	JULY 2017	MATTHEW TRAMMELL P.E.# 69244
		DATE

PRELIMINARY DRAWINGS: THESE DRAWINGS ARE NOT IN FINAL FORM, BUT ARE BEING TRANSMITTED FOR AGENCY REVIEW.